

2025



Ai SERVICES
- NORTHERN IRELAND -



HOLSTEIN CATALOGUE



AI SERVICES

- NORTHERN IRELAND -



Making genetics deliver for you

AI Services (NI) is a trusted farmer-owned company with approximately 2,500 farmer shareholders.

At AI Services our mission is to help NI farmers profit through high quality livestock genetics and to supply an efficient and effective A.I. service to livestock producers throughout Northern Ireland.

Combining our market-leading genetics with informed breeding decisions can help build future farm profitability.

Our team of specialist breeding advisors are on hand to assess your herd's current genetic performance, review its specific strengths and weaknesses, and create a bespoke genetic plan for your herd.

AI Technician Network

Our dedicated team of AI technicians are on hand to provide an effective and efficient insemination service to all our customers throughout Northern Ireland. All calls logged before 10.30am are guaranteed a same day service.

AI Services Stud Facilities





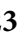

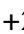

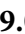
Our Ballycraigy Stud is an EU Approved Semen Collection Centre for cattle and home to dedicated facilities for semen analysis and storage. Semen collected at the stud is eligible for export to EU member states and a range of countries across the globe. Our specialist team at the stud are also available to conduct bull fertility assessments on commercial farms.

For more information phone Ballycraigy on (028) 9083 3123.




Jane Steel

Holstein Sires PTA August 2024

Bull Name	PLI £	Milk Kg	Fat Kg	Fat %	Protein Kg	Protein %	Combined Fat + Protein Kg	Pedigree	Page
Aeronaut	£627	+684	+27.1	+0.00	+27.9	+0.06	+55.0	Aerosmith X Freemax	5
Aerospace 	£815	+692	+54.7	+0.30	+33.2	+0.12	+87.9	Exquisite X Jump Cut	6
Bullpocalypse	£799	+698	+40.0	+0.13	+29.9	+0.08	+69.9	Gadzook X No Excuse	7
Darude	£788	+580	+36.2	+0.15	+28.4	+0.10	+64.6	High Energy X No Excuse	8
Francesco 	£723	+423	+26.4	+0.11	+28.0	+0.16	+54.4	Foreman X Simon	9
Futurama	£685	+398	+39.2	+0.27	+25.1	+0.14	+64.3	Zazzle X Cascade	10
Garido 	£552	+809	+39.6	+0.08	+30.0	+0.04	+69.6	Gymnast X Penley	11
Garrix	£759	+790	+51.6	+0.22	+35.6	+0.11	+87.2	Kevlow X Zazzle	12
Getrich	£646	+957	+39.8	+0.01	+31.8	+0.01	+71.6	Wheelhouse X Pursuit	13
Heroic	£694	+1124	+36.0	-0.10	+37.9	+0.01	+73.9	Esquire X Perfect	14
Indigo 	£404	+423	+25.8	+0.10	+20.0	+0.07	+45.8	Imax X Draco	15
Madtime	£824	+1013	+34.0	-0.07	+35.0	+0.02	+69.0	Mahomes X Pursuit	16
Pellegrino	£640	+963	+30.8	-0.09	+26.7	-0.05	+57.5	Topnotch X Router	17
Pizzazz 	£798	+537	+42.0	+0.23	+28.2	+0.12	+70.2	Overtake X Incredible	19
Powerbuck 	£712	+987	+32.4	-0.08	+28.7	-0.04	+61.1	Tiki X Pursuit	20
Regulus 	£703	+332	+43.8	+0.35	+24.4	+0.16	+68.2	Zazzle X Crimson	21
Saiko	£670	+797	+33.5	+0.02	+28.8	+0.03	+62.3	Magnifique X Pursuit	22
Skovly P	£570	+416	+26.9	+0.12	+24.1	+0.12	+51.0	Slatt P X Nerd RC	23
Sulien 	£622	+343	+27.6	+0.10	+24.6	+0.15	+52.2	Pursuit X Robson	24
Susic	£726	+656	+44.7	+0.21	+30.0	+0.09	+74.7	Magnifique X Zazzle	25
Thunderbird	£685	+608	+43.1	+0.21	+30.5	+0.12	+73.6	Perfect X Magnifique	26
Toolate	£804	+751	+51.9	+0.24	+32.7	+0.09	+84.6	Kevlow X Breakdown	27
Vance	£794	+872	+45.6	+0.12	+38.1	+0.10	+83.7	Holysmokes X Plinko	28
Vandyke 	£822	+888	+53.3	+0.19	+35.7	+0.07	+89.0	Zemini X Plinko	29
Wheelhouse	£579	+771	+35.9	+0.05	+27.6	+0.02	+63.5	Pursuit X Duke	31

Red Holsteins

Maz Red PP	£428	+405	+24.4	+0.09	+16.9	+0.04	+41.3	McDonald P X Solitair P	32
Promise	£642	+852	+23.2	-0.12	+29.5	+0.02	+52.7	Starranger X Riveting	32
Rae Ban	£500	+806	+27.1	-0.06	+25.7	-0.01	+52.8	Network X Altuve	33
Rutilant	£663	+1049	+35.2	-0.07	+31.5	-0.03	+66.7	Sputnik X Altuve	33

 Recommended for Robotic Milking



Front Cover Photo: Daughter of Pellegrino.

Whilst every effort has been made to ensure the accuracy of all information contained in this catalogue, AI Services (NI) Ltd. accepts no responsibility whatsoever for any error, and without prejudice do not accept any liability for loss which may result from any error.

AI Services is the supplier / seller of semen and does not carry any responsibility or liability to the buyer in respect of loss arising from performance or fertility issues, or any other matters which are outside of the direct control of AI Services. The purchase of semen does not guarantee fertility or conception.

AI Services abides by the AHDB Dairy and Holstein UK established Code of Advertising.

A *i Services presents the Top 10 Rankings for the Holstein Sires in this Catalogue. It is recommended you use the sire rankings only as a guide in your selections.*

PLI		
1	Madtime	£824
2	Vandyke	£822
3	Aerospace	£815
4	Toolate	£804
5	Bullpocalypse	£799
6	Pizzazz	£798
7	Vance	£794
8	Darude	£788
9	Garrix	£759
10	Susic	£726

Milk Kgs		
1	Heroic	+1124
2	Rutilant	+1049
3	Madtime	+1013
4	Powerbuck	+987
5	Pellegrino	+963
6	Getrich	+957
7	Vandyke	+888
8	Vance	+872
9	Promise	+852
10	Garido	+809

Fat + Protein Kgs		
1	Vandyke	+89.0
2	Aerospace	+87.9
3	Garrix	+87.2
4	Toolate	+84.6
5	Vance	+83.7
6	Susic	+74.7
7	Heroic	+73.9
8	Thunderbird	+73.6
9	Getrich	+71.6
10	Pizzazz	+70.2

Fat %		
1	Regulus	+0.35
2	Aerospace	+0.30
3=	Futurama	+0.27
3=	Toolate	+0.24
5	Pizzazz	+0.23
6	Garrix	+0.22
7=	Thunderbird	+0.21
7=	Susic	+0.21
9	Vandyke	+0.19
10	Darude	+0.15

Protein %		
1=	Regulus	+0.16
1=	Francesco	+0.16
3	Sulien	+0.15
4	Futurama	+0.14
5=	Aerospace	+0.12
5=	Pizzazz	+0.12
5=	Thunderbird	+0.12
5=	Skovly P	+0.12
9	Garrix	+0.11
10=	Darude	+0.10
10=	Vance	+0.10

Type Merit		
1	Pellegrino	+2.79
2	Francesco	+2.01
3	Aeronaut	+1.99
4	Heroic	+1.94
5	Thunderbird	+1.93
6	Maz Red PP	+1.88
7	Promise	+1.75
8	Powerbuck	+1.69
9	Getrich	+1.48
10	Indigo	+1.47

Mammary		
1	Pellegrino	+3.07
2	Aeronaut	+2.62
3	Maz Red PP	+2.54
4	Francesco	+2.07
5	Promise	+1.89
6	Bullpocalypse	+1.68
7	Powerbuck	+1.62
8	Heroic	+1.59
9	Indigo	+1.50
10	Pizzazz	+1.48

Feet & Legs		
1	Maz Red PP	+1.79
2	Aeronaut	+1.54
3	Thunderbird	+1.53
4	Heroic	+1.49
5	Rutilant	+1.41
6	Francesco	+1.40
7=	Madtime	+1.13
7=	Garido	+1.13
9	Pellegrino	+1.12
10	Promise	+1.10

Fertility		
1	Darude	+13.7
2	Aeronaut	+11.1
3	Powerbuck	+10.5
4	Bullpocalypse	+10.2
5	Madtime	+8.1
6	Francesco	+7.9
7	Futurama	+7.7
8	Saiko	+7.6
9=	Skovly P	+7.3
9=	Toolate	+7.3

Lifespan		
1	Powerbuck	+153
2	Pellegrino	+149
3	Francesco	+146
4	Promise	+140
5=	Darude	+137
5=	Madtime	+137
5=	Pizzazz	+137
8	Bullpocalypse	+125
9	Aeronaut	+122
10	Saiko	+113

Somatic Cell Count		
1	Pellegrino	-27
2=	Rutilant	-26
2=	Vandyke	-26
4	Toolate	-24
5=	Promise	-22
5=	Bullpocalypse	-22
5=	Aerospace	-22
8=	Powerbuck	-21
8=	Regulus	-21
10	Madtime	-20

Direct Calving Ease		
1	Madtime	+0.7
2	Rae Ban	+0.5
3=	Francesco	+0.4
3=	Garrix	+0.4
5=	Susic	+0.3
5=	Maz Red PP	+0.3
5=	Garido	+0.3
5=	Wheelhouse	+0.3
9=	Pizzazz	+0.2
9=	Saiko	+0.2
9=	Skovly P	+0.2

Robotic Milking		
1	Francesco	
2	Garido	
3	Powerbuck	
4	Vandyke	
5	Sulien	
6	Regulus	
7	Aerospace	
8	Pizzazz	
9	Indigo	

Assessing Inbreeding

A degree of inbreeding always occurs when animals related to one another are mated as a result of a concentration of the same genes. See table to the right for Inbreeding Levels.

Rule of Thumb

Commercial producers should avoid matings leading to an inbreeding level of greater than 6.25%.

Mating	Inbreeding %
Sire/Daughter	25%
Full brother/Full sister	25%
Half brother/Half sister	12.5%
Grandsire/Granddaughter	12.5%
Grandson/Granddam	12.5%
Uncle/Niece	6.25%
Son/Granddaughter	6.25%
Daughter/Grandson	6.25%
Full cousins	6.25%
Grandson/Granddaughter	3.13%
Half cousins	3.13%

AERONAUT

Aeronaut ET BLF BYF CVF CDF

Sexed and Conventional

HB No: 60000364054923 AI Code: HO7727
 Beta Casein A2A2 Source: Germany
 Kappa Casein AB DOB: 06.02.22



HOLSTEIN PRODUCTION	
AHDB Dairy	PTA August 2024
Production Reliability 72%	PLI Reliability 65%
PLI	£627
Milk Kg	+684
Fat Kg	+27.1
Fat %	+0.00
Protein Kg	+27.9
Protein %	+0.06
SCI £365	ACI £519 Rel. 65%
Genomic Young Sire Pedigree Index	

✓ High Type Sire +1.99

✓ Daughter Fertility +11.1

✓ Superb Udders +2.62

✓ Positive Components

✓ Excellent Legs + Feet +1.54

✓ Excellent Cow Family

SYNETICS

Aerosmith X Freemax X Benz

MANAGEMENT TRAITS		08/24
Healthy Cow Index	£252	Improver
Enviro Cow Index	+2.3	Improver
Fertility Index	+11.1	Improver
Lifespan	+122	Improver
Somatic Cell Count	-9	Improver
Mastitis	-1	Improver
TB Advantage	+1.5	Desirable
Lameness Index	+2.3	Improver
Maintenance	+29	Desirable
Calf Survival	+1.2	Improver
Direct Calving Ease	-0.4	Easy
Mat. Calving Ease	+1.2	Easy
Gestation Length	-1	Shorter
Digital Dermatitis	+0.1	Improver
Dairy Carcase	+1.0	Improver
Feed Advantage	-82	Improver
Temperament	0.12	Good
Ease of Milk	-0.58	Fast

Below Average Average Above Average

HOLSTEIN CONFORMATION		HUKI 08/24
Young Genomic Pedigree Index		53% Reliability
Type Merit	+1.99	Excellent
Mammary	+2.62	Excellent
Legs & Feet	+1.54	Excellent
Stature	+2.07	160 cm
Chest Width	+1.76	Wide
Body Depth	+0.89	Deep
Angularity	+0.77	Open Rib
Rump Angle	-0.57	Low Pins
Rump Width	+1.76	Wide
Rear Leg Side	+0.20	Sickled
Foot Angle	+1.13	Steep
Fore Udder Att	+3.23	Tight
Rear Udder Ht	+1.74	Very High
Udder Support	+0.81	Strong
Udder Depth	+2.77	20cm Above
Front Teat Pl.	+0.43	Close
Teat Length	-0.54	Long
Rear Teat Pl.	+1.02	Close
Teat Pos. Side	-0.46	Apart
Locomotion	+1.08	Excellent
Condition Score	+0.95	High

-2 +2

AEROSPACE

Peak AltaAerospace

Sexed and Conventional

HB No: 65003252198055 AI Code:
 Beta Casein A1A2 Source: USA
 Kappa Casein BB DOB: 11.10.22



HOLSTEIN PRODUCTION	
AHDB Dairy Production Reliability 73%	PTA August 2024 PLI Reliability 66%
PLI	£815
Milk Kg	+692
Fat Kg	+54.7
Fat %	+0.30
Protein Kg	+33.2
Protein %	+0.12
SCI £523	ACI £668 Rel. 66%
Genomic Young Sire Pedigree Index	

- ✓ **High Ranking Sire in both PLI and Type**
- ✓ **Exceptional Fat Improvement**
- ✓ **+88 kgs Fat + Protein**
- ✓ **Suitable for Robotic Milking**
- ✓ **High Wide Rear Udder attachment**
- ✓ **Improves Teat Length**



Exquisite X Jump Cut X Lionel

MANAGEMENT TRAITS		08/24
Healthy Cow Index	£148	Improver
Enviro Cow Index	+4.0	Improver
Fertility Index	-0.7	Improver
Lifespan	+82	Improver
Somatic Cell Count	-22	Improver
Mastitis	-2	Improver
TB Advantage	+3.7	Desirable
Lameness Index	+2.3	Improver
Maintenance	-3	Desirable
Calf Survival	+1.9	Improver
Direct Calving Ease	-0.2	Easy
Mat. Calving Ease	+0.9	Easy
Gestation Length	-3	Shorter
Digital Dermatitis	+0.1	Improver
Dairy Carcase	+0.3	Improver
Feed Advantage	+129	Improver
Temperament	+0.28	Good
Ease of Milk	+0.95	Fast

Below Average Average Above Average

HOLSTEIN CONFORMATION		HUKI 08/24 53% Reliability
Young Genomic Pedigree Index		
Type Merit	+1.21	Excellent
Mammary	+1.12	Excellent
Legs & Feet	+0.62	Excellent
Stature	+0.35	160 cm
Chest Width	-0.55	Wide
Body Depth	-0.94	Deep
Angularity	+1.40	Open Rib
Rump Angle	+0.27	Low Pins
Rump Width	+0.59	Wide
Rear Leg Side	-0.10	Sickled
Foot Angle	+0.07	Steep
Fore Udder Att	+0.59	Tight
Rear Udder Ht	+1.58	Very High
Udder Support	+0.30	Strong
Udder Depth	+0.64	20cm Above
Front Teat Pl.	-0.51	Close
Teat Length	+0.41	Long
Rear Teat Pl.	-0.36	Close
Teat Pos. Side	+0.10	Apart
Locomotion	+0.54	Excellent
Condition Score	-1.55	High

-2 +2

BULLPOCALYPSE

Peak Bullpocalypse ET BLF BYF CVF DPF CDF

HB No: 65003247843699 AI Code: HO7832
 Beta Casein A2A2 Source: USA
 Kappa Casein BB DOB: 24.05.22



Peak Bullpocalypse

HOLSTEIN PRODUCTION	
AHDB Dairy	PTA August 2024
Production Reliability 73%	PLI Reliability 66%
PLI	£799
Milk Kg	+698
Fat Kg	+40.0
Fat %	+0.13
Protein Kg	+29.9
Protein %	+0.08
SCI £539	ACI £695 Rel. 66%
Genomic Young Sire Pedigree Index	

✓ **High PLI Sire**

✓ **Ideal leg angle setting**

✓ **+1.68 Udders**

✓ **+70kgs Fat + Protein**

✓ **Massive Daughter Fertility at +10.2**

✓ **Positive in all the Management Traits**

GENEX

Gadzook X No Excuse X Klutch

MANAGEMENT TRAITS		08/24
Healthy Cow Index	£273	Improver
Enviro Cow Index	+3.4	Improver
Fertility Index	+10.2	Improver
Lifespan	+125	Improver
Somatic Cell Count	-22	Improver
Mastitis	-2	Improver
TB Advantage	+1.6	Desirable
Lameness Index	+4.1	Improver
Maintenance	+3	Desirable
Calf Survival	+2.2	Improver
Direct Calving Ease	-0.6	Easy
Mat. Calving Ease	+1.2	Easy
Gestation Length	-3	Shorter
Digital Dermatitis	+0.7	Improver
Dairy Carcase	+0.9	Improver
Feed Advantage	+60	Improver
Temperament	-0.04	Good
Ease of Milk	-0.18	Fast

Below Average Average Above Average

HOLSTEIN CONFORMATION		HUKI 08/24
Young Genomic Pedigree Index		53% Reliability
Type Merit	+1.19	Excellent
Mammary	+1.68	Excellent
Legs & Feet	+0.46	Excellent
Stature	+0.35	160 cm
Chest Width	+0.08	Wide
Body Depth	-0.80	Deep
Angularity	+0.43	Open Rib
Rump Angle	-0.55	Low Pins
Rump Width	+1.19	Wide
Rear Leg Side	+0.62	Sickled
Foot Angle	-0.29	Steep
Fore Udder Att	+1.68	Tight
Rear Udder Ht	+0.93	Very High
Udder Support	+0.76	Strong
Udder Depth	+1.47	20cm Above
Front Teat Pl.	+0.24	Close
Teat Length	+0.23	Long
Rear Teat Pl.	+1.08	Close
Teat Pos. Side	+0.00	Apart
Locomotion	+0.55	Excellent
Condition Score	-0.38	High

-2 +2

DARUDE

Peak AltaDarude ET BLF BYF CVF DPF POF RDF CDF

HB No: 65003243355665 AI Code: HO8068
 Beta Casein A1A2 Source: USA
 Kappa Casein BB DOB: 02.06.22



HOLSTEIN PRODUCTION	
AHDB Dairy	PTA August 2024
Production Reliability 73%	PLI Reliability 66%
PLI	£788
Milk Kg	+580
Fat Kg	+36.2
Fat %	+0.15
Protein Kg	+28.4
Protein %	+0.10
SCI £572	ACI £719 Rel. 66%
Genomic Young Sire Pedigree Index	

- ✓ **Exceptional high Daughter Fertility**
- ✓ **Improves allround production + components**
- ✓ **Excellent Rump Width**
- ✓ **Lowers high pin setting**
- ✓ **Excels on the Healthy Cow Index**
- ✓ **Increases Milking Speed**



High Energy X No Excuse X Klutch

MANAGEMENT TRAITS		08/24
Healthy Cow Index	£272	Improver
Enviro Cow Index	+3.6	Improver
Fertility Index	+13.7	Improver
Lifespan	+137	Improver
Somatic Cell Count	-11	Improver
Mastitis	+0	Improver
TB Advantage	+2.5	Desirable
Lameness Index	+3.8	Improver
Maintenance	-1	Desirable
Calf Survival	+32	Improver
Direct Calving Ease	-0.2	Easy
Mat. Calving Ease	+10	Easy
Gestation Length	-2	Shorter
Digital Dermatitis	+0.8	Improver
Dairy Carcase	+0.7	Improver
Feed Advantage	+91	Improver
Temperament	+0.62	Good
Ease of Milk	+1.41	Fast

Below Average Average Above Average

HOLSTEIN CONFORMATION		HUKI 08/24
Young Genomic Pedigree Index		53% Reliability
Type Merit	+0.40	Excellent
Mammary	+1.38	Excellent
Legs & Feet	+0.03	Excellent
Stature	+0.50	160 cm
Chest Width	-0.60	Wide
Body Depth	-0.61	Deep
Angularity	+1.08	Open Rib
Rump Angle	+1.88	Low Pins
Rump Width	+1.24	Wide
Rear Leg Side	+1.14	Sickled
Foot Angle	-1.34	Steep
Fore Udder Att	+1.36	Tight
Rear Udder Ht	+1.28	Very High
Udder Support	+0.46	Strong
Udder Depth	+1.04	20cm Above
Front Teat Pl.	+1.31	Close
Teat Length	-0.10	Long
Rear Teat Pl.	+1.47	Close
Teat Pos. Side	+0.18	Apart
Locomotion	-0.03	Excellent
Condition Score	-0.65	High

-2 +2

FRANCESCO

Francesco ET BLF BYF CVF CDF

Sexed and Conventional

HB No: 60000364300459 AI Code: HO7619
 Beta Casein A1A2 Source: Germany
 Kappa Casein AB DOB: 28.01.22



HOLSTEIN PRODUCTION	
AHDB Dairy	PTA August 2024
Production Reliability 73%	PLI Reliability 66%
PLI	£723
Milk Kg	+423
Fat Kg	+26.4
Fat %	+0.11
Protein Kg	+28.0
Protein %	+0.16
SCI £517	ACI £640 Rel. 66%
Genomic Young Sire Pedigree Index	

✓ **Robotic Milking**

✓ **Improves Longevity**

✓ **Super Udders +2.07**

✓ **Outcross Pedigree**

✓ **Lowers Stature**

✓ **Improves Locomotion**

SYNETICS

Foreman X Simon X My Dream

MANAGEMENT TRAITS		08/24
Healthy Cow Index	£240	Improver
Enviro Cow Index	+3.3	Improver
Fertility Index	+7.9	Improver
Lifespan	+146	Improver
Somatic Cell Count	-13	Improver
Mastitis	-2	Improver
TB Advantage	+2.4	Desirable
Lameness Index	+2.4	Improver
Maintenance	+2	Desirable
Calf Survival	+0.3	Improver
Direct Calving Ease	+0.4	Easy
Mat. Calving Ease	+0.7	Easy
Gestation Length	-2	Shorter
Digital Dermatitis	+0.5	Improver
Dairy Carcase	+1.2	Improver
Feed Advantage	+62	Improver
Temperament	-0.7	Good
Ease of Milk	+0.07	Fast

Below Average Average Above Average

HOLSTEIN CONFORMATION		HUKI 08/24
Young Genomic Pedigree Index		54% Reliability
Type Merit	+2.01	Excellent
Mammary	+2.07	Excellent
Legs & Feet	+1.40	Excellent
Stature	-0.28	160 cm
Chest Width	+0.80	Wide
Body Depth	+0.02	Deep
Angularity	+0.21	Open Rib
Rump Angle	-1.10	Low Pins
Rump Width	+0.47	Wide
Rear Leg Side	-0.53	Sickled
Foot Angle	+0.25	Steep
Fore Udder Att	+2.13	Tight
Rear Udder Ht	+1.28	Very High
Udder Support	-0.35	Strong
Udder Depth	+1.79	20cm Above
Front Teat Pl.	+0.41	Close
Teat Length	+0.57	Long
Rear Teat Pl.	-1.76	Close
Teat Pos. Side	-0.36	Apart
Locomotion	+1.77	Excellent
Condition Score	+1.09	High

-2 +2

FUTURAMA

Peak AltaFutura ET BLF BYF CVF DPF CDF

HB No: 65003215425949 AI Code: HO7371
 Beta Casein A1A2 Source: USA
 Kappa Casein AB DOB: 08.11.20



HOLSTEIN PRODUCTION	
AHDB Dairy	PTA August 2024
Production Reliability 74%	PLI Reliability 68%
PLI	£685
Milk Kg	+398
Fat Kg	+39.2
Fat %	+0.27
Protein Kg	+25.1
Protein %	+0.14
SCI £474	ACI £600 Rel. 68%
Genomic Young Sire Pedigree Index	

- ✓ **Excellent progeny on local farms**
- ✓ **Fertility Index**
- ✓ **Component Specialist**
- ✓ **Udders**
- ✓ **Over +64 Kgs Fat + Protein**
- ✓ **All Round Type Improver**



Zazzle X Cascade X Reason

MANAGEMENT TRAITS		08/24
Healthy Cow Index	£196	Improver
Enviro Cow Index	+3.0	Improver
Fertility Index	+7.7	Improver
Lifespan	+85	Improver
Somatic Cell Count	-19	Improver
Mastitis	-2	Improver
TB Advantage	+1.9	Desirable
Lameness Index	+2.2	Improver
Maintenance	+7	Desirable
Calf Survival	-0.7	Improver
Direct Calving Ease	-0.8	Easy
Mat. Calving Ease	+0.8	Easy
Gestation Length	-1	Shorter
Digital Dermatitis	+0.2	Improver
Dairy Carcase	-0.1	Improver
Feed Advantage	+53	Improver
Temperament	+0.47	Good
Ease of Milk	+0.93	Fast

Below Average Average Above Average

HOLSTEIN CONFORMATION		HUKI 08/24
Young Genomic Pedigree Index		58% Reliability
Type Merit	+0.80	Excellent
Mammary	+1.28	Excellent
Legs & Feet	+0.70	Excellent
Stature	+1.15	160 cm
Chest Width	-0.37	Wide
Body Depth	-0.04	Deep
Angularity	+0.90	Open Rib
Rump Angle	+0.35	Low Pins
Rump Width	+0.67	Wide
Rear Leg Side	+0.34	Sickled
Foot Angle	+1.16	Steep
Fore Udder Att	+1.86	Tight
Rear Udder Ht	+0.95	Very High
Udder Support	+0.34	Strong
Udder Depth	+1.22	20cm Above
Front Teat Pl.	+1.10	Close
Teat Length	-0.35	Long
Rear Teat Pl.	+0.92	Close
Teat Pos. Side	+0.10	Apart
Locomotion	+0.33	Excellent
Condition Score	-1.33	High

-2 +2

Sexed and Conventional

Daughter Proven



Daughter: BGW Garida VG86

HOLSTEIN PRODUCTION	
AHDB Dairy	PTA August 2024
Production Reliability 82%	PLI Reliability 84%
PLI	£552
Milk Kg	+809
Fat Kg	+39.6
Fat %	+0.08
Protein Kg	+30.0
Protein %	+0.04
SCI £337	ACI £466
Rel. 84%	
Daughter Proven - 4928 Daughters in 1288 Herds	

✓ **High Production**

✓ **Strong Robust Cows**

✓ **Robotic Milking**

✓ **Locomotion**

✓ **4928 Daughters**

✓ **Exceptional Rump Width**

Gymnast X Penley X Boss

MANAGEMENT TRAITS		08/24
Healthy Cow Index	£87	Improver
Enviro Cow Index	+2.3	Improver
Fertility Index	-2.0	Improver
Lifespan	+52	Improver
Somatic Cell Count	-19	Improver
Mastitis	-1	Improver
Maintenance	+16	Desirable
Direct Calving Ease	+0.3	Easy
Mat. Calving Ease	+1.5	Easy

Below Average Average Above Average



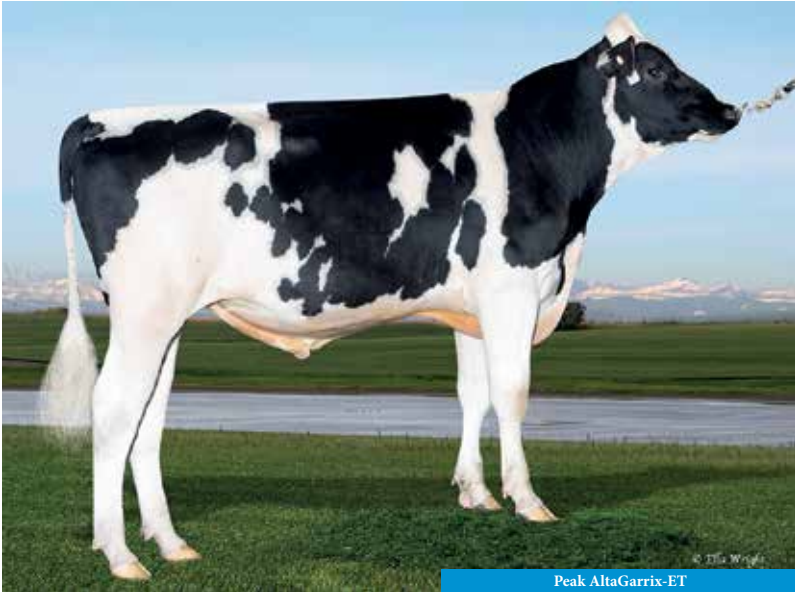
HOLSTEIN CONFORMATION		HUKI 08/24
Interbull Type Proof	76% Reliability, 2493 Daughters in 637 Herds	
Type Merit	+0.92	Excellent
Mammary	+1.12	Excellent
Legs & Feet	+1.13	Excellent
Stature	+0.2	160 cm
Chest Width	+0.29	Wide
Body Depth	-0.25	Deep
Angularity	+0.43	Open Rib
Rump Angle	-1.07	Low Pins
Rump Width	+1.99	Wide
Rear Leg Side	-0.56	Sickled
Foot Angle	-0.45	Steep
Fore Udder Att	+1.41	Tight
Rear Udder Ht	+2.15	Very High
Udder Support	+1.06	Strong
Udder Depth	+0.56	20cm Above
Front Teat Pl.	-1.29	Close
Teat Length	+0.48	Long
Rear Teat Pl.	+0.44	Close
Locomotion	+1.62	Excellent
Condition Score	-0.10	High

-2 +2

GARRIX

Peak AltaGarrix ET

HB No: 65003247843748 AI Code: HO7795
 Beta Casein A1A2 Source: USA
 Kappa Casein AB DOB: 07.06.22



HOLSTEIN PRODUCTION	
AHDB Dairy	PTA August 2024
Production Reliability 72%	PLI Reliability 66%
PLI	£759
Milk Kg	+790
Fat Kg	+51.6
Fat %	+0.22
Protein Kg	+35.6
Protein %	+0.11
SCI £513	ACI £631 Rel. 66%
Genomic Young Sire Pedigree Index	

- ✓ **+87 Kg Fat + Protein**
- ✓ **Improves Rump Width**
- ✓ **High Milk Production**
- ✓ **Reduces Stature**
- ✓ **Modern Pedigree**
- ✓ **Exceptionally high Feed Advantage**



Kevlow X Zazzle X Huey

MANAGEMENT TRAITS		08/24
Healthy Cow Index	£80	Improver
Enviro Cow Index	+3.9	Improver
Fertility Index	+2.1	Improver
Lifespan	+61	Improver
Somatic Cell Count	-9	Improver
Mastitis	-1	Improver
TB Advantage	+3.1	Desirable
Lameness Index	+2.5	Improver
Maintenance	-6	Desirable
Calf Survival	-1.6	Improver
Direct Calving Ease	+0.4	Easy
Mat. Calving Ease	+1.1	Easy
Gestation Length	-2	Shorter
Digital Dermatitis	+0.3	Improver
Dairy Carcase	+0.7	Improver
Feed Advantage	+135	Improver
Temperament	-0.33	Good
Ease of Milk	-0.03	Fast

HOLSTEIN CONFORMATION		HUKI 08/24
Young Genomic Pedigree Index		53% Reliability
Type Merit	+0.22	Excellent
Mammary	+0.30	Excellent
Legs & Feet	+0.13	Excellent
Stature	-0.31	160 cm
Chest Width	-0.30	Wide
Body Depth	-0.87	Deep
Angularity	+0.31	Open Rib
Rump Angle	+0.34	Low Pins
Rump Width	+0.71	Wide
Rear Leg Side	-0.36	Sickled
Foot Angle	+0.01	Steep
Fore Udder Att	+0.46	Tight
Rear Udder Ht	+0.25	Very High
Udder Support	-0.02	Strong
Udder Depth	+0.01	20cm Above
Front Teat Pl.	+0.17	Close
Teat Length	-0.18	Long
Rear Teat Pl.	+0.11	Close
Teat Pos. Side	+0.06	Apart
Locomotion	+0.60	Excellent
Condition Score	-0.72	High

Below Average Average Above Average

-2 +2

GETRICH

Peak AltaGetrich BLF BYF CVF DPF CDF

Sexed and Conventional

HB No: 65003224956642 AI Code: HO7582
 Beta Casein A2A2 Source: USA
 Kappa Casein AB DOB: 23.06.21



Peak AltaGetrich

HOLSTEIN PRODUCTION	
AHDB Dairy	PTA August 2024
Production Reliability 73%	PLI Reliability 67%
PLI	£646
Milk Kg	+957
Fat Kg	+39.8
Fat %	+0.01
Protein Kg	+31.8
Protein %	+0.01
SCI £357	ACI £507 Rel. 67%
Genomic Young Sire Pedigree Index	

- ✓ **Top Production Sire**
- ✓ **Positive Daughter Fertility**
- ✓ **Exceptional Strength**
- ✓ **Excellent in all Management traits**
- ✓ **+71 Kgs Fat + Protein**
- ✓ **Wide rumps with lower pin setting**



Wheelhouse X Pursuit X Samuri

MANAGEMENT TRAITS		08/24
Healthy Cow Index	£142	Improver
Enviro Cow Index	+2.9	Improver
Fertility Index	+5.3	Improver
Lifespan	+79	Improver
Somatic Cell Count	-12	Improver
Mastitis	-1	Improver
TB Advantage	+3.3	Desirable
Lameness Index	+1.9	Improver
Maintenance	+12	Desirable
Calf Survival	-0.1	Improver
Direct Calving Ease	-0.9	Easy
Mat. Calving Ease	+1.3	Easy
Gestation Length	-2	Shorter
Digital Dermatitis	+0.3	Improver
Dairy Carcase	+1.4	Improver
Feed Advantage	+40	Improver
Temperament	+0.45	Good
Ease of Milk	+1.33	Fast

Below Average Average Above Average

HOLSTEIN CONFORMATION		HUKI 08/24
Young Genomic Pedigree Index		56% Reliability
Type Merit	+1.48	Excellent
Mammary	+1.29	Excellent
Legs & Feet	+0.56	Excellent
Stature	+0.55	160 cm
Chest Width	+1.59	Wide
Body Depth	+1.62	Deep
Angularity	+1.53	Open Rib
Rump Angle	+0.89	Low Pins
Rump Width	+2.93	Wide
Rear Leg Side	+1.42	Sickled
Foot Angle	-0.87	Steep
Fore Udder Att	+0.08	Tight
Rear Udder Ht	+1.02	Very High
Udder Support	+1.20	Strong
Udder Depth	-0.21	20cm Above
Front Teat Pl.	+1.36	Close
Teat Length	-0.39	Long
Rear Teat Pl.	+2.27	Close
Teat Pos. Side	+2.01	Apart
Locomotion	+0.81	Excellent
Condition Score	-0.14	High

-2 +2

HEROIC

Duckett Heroic ET BYF CVF POF RDF CDF

HB No: 65003260843013 AI Code: HO7891
 Beta Casein A2A2 Source: USA
 Kappa Casein AB DOB: 09.11.22



MGD: S-S-I Doc Have Not 8784-ET EX96

HOLSTEIN PRODUCTION	
AHDB Dairy	PTA August 2024
Production Reliability 73%	PLI Reliability 66%
PLI	£694
Milk Kg	+1124
Fat Kg	+36.0
Fat %	-0.10
Protein Kg	+37.9
Protein %	+0.01
SCI £394	ACI £554 Rel. 66%
Genomic Young Sire Pedigree Index	

- ✓ **Ranked in the top 15 UK Production bulls**
- ✓ **Excellent legs and feet with great locomotion**
- ✓ **Maternal Grand Dam EX96**
- ✓ **Positive in all Management Traits**
- ✓ **9 Generations of VG + EX dams**
- ✓ **Exceptional Type Sire**



Esquire X Perfect X King Doc

MANAGEMENT TRAITS		08/24
Healthy Cow Index	£156	Improver
Enviro Cow Index	+3.1	Improver
Fertility Index	+4.2	Improver
Lifespan	+76	Improver
Somatic Cell Count	-9	Improver
Mastitis	+0	Improver
TB Advantage	+2.2	Desirable
Lameness Index	+1.9	Improver
Maintenance	+3	Desirable
Calf Survival	+1.5	Improver
Direct Calving Ease	-0.3	Easy
Mat. Calving Ease	+1.3	Easy
Gestation Length	-1	Shorter
Digital Dermatitis	+0.4	Improver
Dairy Carcase	+0.5	Improver
Feed Advantage	+46	Improver
Temperament	+0.61	Good
Ease of Milk	+1.19	Fast

Below Average Average Above Average

HOLSTEIN CONFORMATION		HUKI 08/24
Young Genomic Pedigree Index		53% Reliability
Type Merit	+1.94	Excellent
Mammary	+1.59	Excellent
Legs & Feet	+1.49	Excellent
Stature	+0.13	160 cm
Chest Width	+0.57	Wide
Body Depth	+0.43	Deep
Angularity	+1.15	Open Rib
Rump Angle	-1.20	Low Pins
Rump Width	+1.61	Wide
Rear Leg Side	-0.01	Sickled
Foot Angle	+0.26	Steep
Fore Udder Att	+0.99	Tight
Rear Udder Ht	+1.21	Very High
Udder Support	+0.88	Strong
Udder Depth	+0.38	20cm Above
Front Teat Pl.	+0.74	Close
Teat Length	+0.57	Long
Rear Teat Pl.	+1.04	Close
Teat Pos. Side	+0.81	Apart
Locomotion	+1.71	Excellent
Condition Score	-0.8	High

-2 +2



HOLSTEIN PRODUCTION	
AHDB Dairy Production Reliability 98%	PTA August 2024 PLI Reliability 90%
PLI	£404
Milk Kg	+423
Fat Kg	+25.8
Fat %	+0.10
Protein Kg	+20.0
Protein %	+0.07
SCI £245	ACI £362 Rel. 90%
Daughter Proven - 59 UK Daughters in 15 UK Herds	

- ✓ **Daughter Proven**
- ✓ **Early Classified Daughters scoring highly**
- ✓ **Great balance of Production and Type**
- ✓ **Recommended for Robotic Milking**
- ✓ **Exceptional Teat Length**
- ✓ **Great Udders**



Imax X Draco X Supersire

MANAGEMENT TRAITS		08/24
Healthy Cow Index	£75	Improver
Enviro Cow Index	+1.8	Improver
Fertility Index	-0.4	Improver
Lifespan	+49	Improver
Somatic Cell Count	-1	Improver
Mastitis	+1	Improver
TB Advantage	+2.6	Desirable
Lameness Index	+1.7	Improver
Maintenance	+10	Desirable
Calf Survival	+2.2	Improver
Direct Calving Ease	-0.4	Easy
Mat. Calving Ease	+0.5	Easy
Gestation Length	-2	Shorter
Digital Dermatitis	+0.3	Improver
Dairy Carcase	+2.2	Improver
Feed Advantage	-23	Improver
Temperament	+0.0	Good
Ease of Milk	+1.04	Fast

Below Average Average Above Average

HOLSTEIN CONFORMATION		HUKI 08/24
Interbull Type Proof		86% Reliability, 59 UK Daughters in 15 UK Herds
Type Merit	+1.47	Excellent
Mammary	+1.50	Excellent
Legs & Feet	+0.73	Excellent
Stature	+0.64	160 cm
Chest Width	+0.95	Wide
Body Depth	+0.18	Deep
Angularity	+1.00	Open Rib
Rump Angle	+0.49	Low Pins
Rump Width	+0.85	Wide
Rear Leg Side	+0.34	Sickled
Foot Angle	-0.08	Steep
Fore Udder Att	+0.42	Tight
Rear Udder Ht	+1.54	Very High
Udder Support	+0.85	Strong
Udder Depth	+0.65	20cm Above
Front Teat Pl.	+0.09	Close
Teat Length	+1.23	Long
Rear Teat Pl.	+0.15	Close
Teat Pos. Side	+0.37	Apart
Locomotion	+0.62	Excellent
Condition Score	+0.48	High

-2 +2

MADTIME

Peak RUW Madtime ET BLF BYF CVF CDF

HB No: 60000542202582 AI Code: HO8021
 Beta Casein A2A2 Source: Germany
 Kappa Casein BB DOB: 01.06.22



HOLSTEIN PRODUCTION	
AHDB Dairy	PTA August 2024
Production Reliability 72%	PLI Reliability 66%
PLI	£824
Milk Kg	+1013
Fat Kg	+34.0
Fat %	-0.07
Protein Kg	+35.0
Protein %	+0.02
SCI £547	ACI £711 Rel. 66%
Genomic Young Sire Pedigree Index	

✓ **Top Production Sire at +1013 Kgs Milk**

✓ **Sire of Sons**

✓ **High PLI**

✓ **Excellent in all Management Traits**

✓ **Lowers Stature**

✓ **Improves Longevity**

Mahomes X Pursuit X Medley

MANAGEMENT TRAITS		08/24
Healthy Cow Index	£258	Improver
Enviro Cow Index	+3.8	Improver
Fertility Index	+8.1	Improver
Lifespan	+137	Improver
Somatic Cell Count	-20	Improver
Mastitis	-2	Improver
TB Advantage	+2.7	Desirable
Lameness Index	+1.3	Improver
Maintenance	-15	Desirable
Calf Survival	+2.6	Improver
Direct Calving Ease	+0.7	Easy
Mat. Calving Ease	+1.4	Easy
Gestation Length	-3	Shorter
Digital Dermatitis	+0.3	Improver
Dairy Carcase	+1.4	Improver
Feed Advantage	+153	Improver
Temperament	+0.67	Good
Ease of Milk	+0.16	Fast

Below Average Average Above Average

HOLSTEIN CONFORMATION		HUKI 08/24
Young Genomic Pedigree Index		54% Reliability
Type Merit	+1.28	Excellent
Mammary	+1.41	Excellent
Legs & Feet	+1.13	Excellent
Stature	-1.54	160 cm
Chest Width	-0.18	Wide
Body Depth	-1.11	Deep
Angularity	-0.24	Open Rib
Rump Angle	-0.41	Low Pins
Rump Width	+0.42	Wide
Rear Leg Side	-0.01	Sickled
Foot Angle	-0.13	Steep
Fore Udder Att	+0.38	Tight
Rear Udder Ht	+1.39	Very High
Udder Support	+0.59	Strong
Udder Depth	-0.29	20cm Above
Front Teat Pl.	+0.53	Close
Teat Length	-0.09	Long
Rear Teat Pl.	+0.81	Close
Teat Pos. Side	+1.47	Apart
Locomotion	+1.30	Excellent
Condition Score	+0.26	High

-2 +2



PELLEGRINO

Pellegrino BLF BYF CVF MFF



Daughter Proven

Sexed and Conventional

HB No: 71007253843259 AI Code: HO6761
 Beta Casein A1A1 Source: France
 Kappa Casein AA DOB: 30.10.19

HOLSTEIN PRODUCTION

AHDB Dairy PTA August 2024
 Production Reliability 85% PLI Reliability 78%

PLI	£640
Milk Kg	+963
Fat Kg	+30.8
Fat %	-0.09
Protein Kg	+26.7
Protein %	-0.05
SCI £318	ACI £518 Rel. 78%
Daughter Proven - 424 Daughters in 206 Herds	

✓ **No. 6 in UK Proven Type Sires**

✓ **Production**

✓ **Healthy Cow Index £305**

✓ **Fertility Index**

✓ **Lifespan +149 Days**

✓ **Lowers SCC**

SYNETICS

Topnotch X Router X Muscadet

MANAGEMENT TRAITS		08/24
Healthy Cow Index	£305	Improver
Enviro Cow Index	+2.3	Improver
Fertility Index	+6.9	Improver
Lifespan	+149	Improver
Somatic Cell Count	-27	Improver
Mastitis	-2	Improver
TB Advantage	+1.4	Desirable
Lameness Index	+2.5	Improver
Maintenance	+20	Desirable
Calf Survival	+4.0	Improver
Direct Calving Ease	-0.1	Easy
Mat. Calving Ease	+1.7	Easy
Gestation Length	-2	Shorter
Digital Dermatitis	+0.4	Improver
Dairy Carcase	+0.8	Improver
Feed Advantage	-68	Improver
Temperament	+1.68	Good
Ease of Milk	+0.32	Fast

Below Average Average Above Average

HOLSTEIN CONFORMATION

Interbull Type Proof		HUKI 08/24
		72% Reliability, 79 Daughters
Type Merit	+2.79	Excellent
Mammary	+3.07	Excellent
Legs & Feet	+1.12	Excellent
Stature	+2.05	160 cm
Chest Width	+1.06	Wide
Body Depth	+1.64	Deep
Angularity	+3.02	Open Rib
Rump Angle	+0.44	Low Pins
Rump Width	+2.44	Wide
Rear Leg Side	-0.113	Sickled
Foot Angle	-0.15	Steep
Fore Udder Att	+2.15	Tight
Rear Udder Ht	+3.78	Very High
Udder Support	+2.66	Strong
Udder Depth	+1.93	20cm Above
Front Teat Pl.	+0.55	Close
Teat Length	+0.72	Long
Rear Teat Pl.	+0.41	Close
Teat Pos. Side	+0.49	Apart
Locomotion	+1.14	Excellent
Condition Score	-0.66	High

-2 +2



SCANNING SERVICES

Scan from 30 days post insemination

Improve fertility management in your herd

Identify expected calving dates

Poor fertility in the UK herds cost around £250 per cow annually
(Source NADIS)

SOME OF OUR SERVICES

- Leading Genetics
- Breeding Advice
- Stud Facilities
- Scanning Service
- Embryo Transfer
- Liquid Nitrogen

AI Services
Ballycraigy
671 Antrim Road
Newtownabbey
Co. Antrim
BT36 4RL

Phone: +44 (028) 9083 3123
Website: www.ai-services.co.uk

PIZZAZZ

Peak AltaPizzazz

Sexed and Conventional

HB No: 65003251555560 AI Code:
 Beta Casein A2A2 Source: USA
 Kappa Casein BB DOB: 12.09.22



4th Dam: MGD Bru-Dale Zeronica-ET

HOLSTEIN PRODUCTION	
AHDB Dairy	PTA August 2024
Production Reliability 73%	PLI Reliability 66%
PLI	£798
Milk Kg	+537
Fat Kg	+42.0
Fat %	+0.23
Protein Kg	+28.2
Protein %	+0.12
SCI £566	ACI £704 Rel. 66%
Genomic Young Sire Pedigree Index	

- ✓ **All Round Production and Component Sire**
- ✓ **Increases Longevity**
- ✓ **Lowers Stature**
- ✓ **Udders**
- ✓ **Excellent Rump Width**
- ✓ **Impressive Indexes for Feed Efficiency**



Overtake X Incredible X Pursuit

MANAGEMENT TRAITS		08/24
Healthy Cow Index	£235	Improver
Enviro Cow Index	+3.8	Improver
Fertility Index	+6.6	Improver
Lifespan	+137	Improver
Somatic Cell Count	-19	Improver
Mastitis	-2	Improver
TB Advantage	+2.5	Desirable
Lameness Index	+3.0	Improver
Maintenance	-6	Desirable
Calf Survival	+1.7	Improver
Direct Calving Ease	+0.2	Easy
Mat. Calving Ease	+1.0	Easy
Gestation Length	-1	Shorter
Digital Dermatitis	+0.8	Improver
Dairy Carcase	+1.4	Improver
Feed Advantage	+115	Improver
Temperament	-0.15	Good
Ease of Milk	+0.14	Fast

Below Average Average Above Average

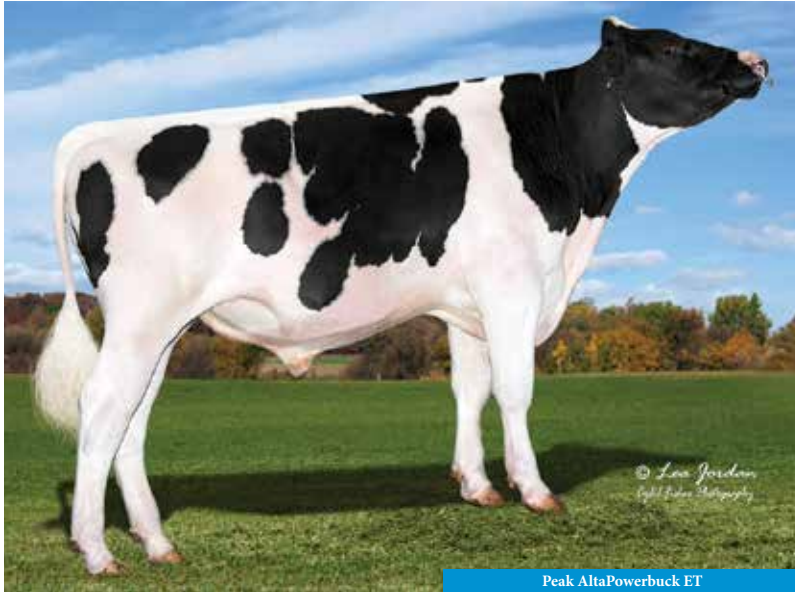
HOLSTEIN CONFORMATION		HUKI 08/24
Young Genomic Pedigree Index		53% Reliability
Type Merit	+1.19	Excellent
Mammary	+1.48	Excellent
Legs & Feet	+0.57	Excellent
Stature	-0.48	160 cm
Chest Width	-0.16	Wide
Body Depth	-1.05	Deep
Angularity	+0.12	Open Rib
Rump Angle	+0.34	Low Pins
Rump Width	+1.52	Wide
Rear Leg Side	+0.08	Sickled
Foot Angle	-0.78	Steep
Fore Udder Att	+1.39	Tight
Rear Udder Ht	+0.74	Very High
Udder Support	+0.51	Strong
Udder Depth	+1.07	20cm Above
Front Teat Pl.	+1.12	Close
Teat Length	+0.06	Long
Rear Teat Pl.	+0.52	Close
Teat Pos. Side	+0.26	Apart
Locomotion	+0.71	Excellent
Condition Score	-0.53	High

-2 +2

POWERBUCK

Peak AltaPowerbuck ET

HB No: 65003213001199 AI Code: HO7219
 Beta Casein A1A2 Source: USA
 Kappa Casein AB DOB: 12.09.20



Peak AltaPowerbuck ET

HOLSTEIN PRODUCTION

AHDB Dairy PTA August 2024
 Production Reliability 74% PLI Reliability 68%

PLI	£712
Milk Kg	+987
Fat Kg	+32.4
Fat %	-0.08
Protein Kg	+28.7
Protein %	-0.04
SCI £442	ACI £600 Rel. 68%
Genomic Young Sire Pedigree Index	

✓ **Production**

✓ **Chest Width**

✓ **Healthy Cow Index**

✓ **Robotic Milking**

✓ **Daughter Fertility**

✓ **Lifespan**



Tiki X Pursuit X Medley

MANAGEMENT TRAITS		08/24
Healthy Cow Index	£257	Improver
Enviro Cow Index	+3.2	Improver
Fertility Index	+10.5	Improver
Lifespan	+153	Improver
Somatic Cell Count	-21	Improver
Mastitis	-2	Improver
TB Advantage	+3.3	Desirable
Lameness Index	+1.9	Improver
Maintenance	+1	Desirable
Calf Survival	+0.2	Improver
Direct Calving Ease	-0.1	Easy
Mat. Calving Ease	+1.5	Easy
Gestation Length	-2	Shorter
Digital Dermatitis	+0.2	Improver
Dairy Carcase	+2.0	Improver
Feed Advantage	+77	Improver
Temperament	+0.41	Good
Ease of Milk	+0.74	Fast

Below Average Average Above Average

HOLSTEIN CONFORMATION

Young Genomic Pedigree Index HUKI 08/24 56% Reliability

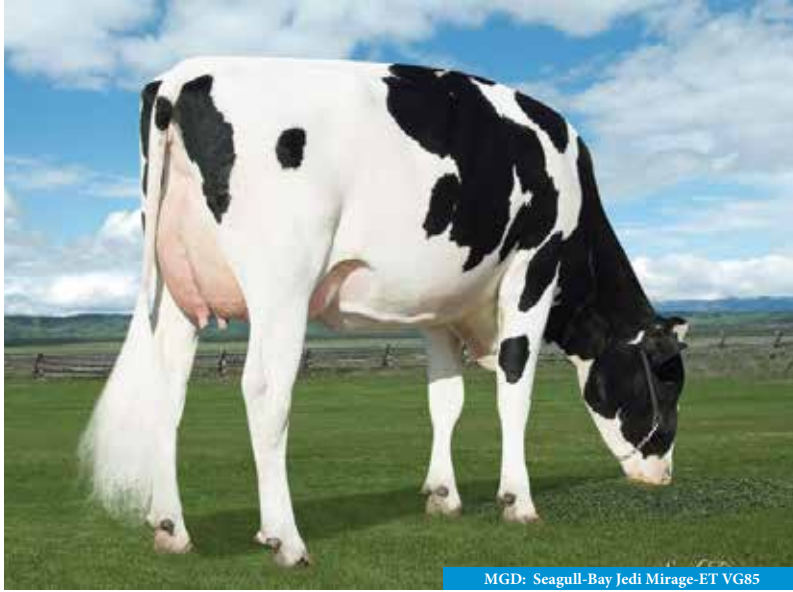
Type Merit	+1.69	Excellent
Mammary	+1.62	Excellent
Legs & Feet	+0.84	Excellent
Stature	-0.69	160 cm
Chest Width	+1.29	Wide
Body Depth	-0.78	Deep
Angularity	-0.19	Open Rib
Rump Angle	+0.04	Low Pins
Rump Width	+0.43	Wide
Rear Leg Side	-0.23	Sickled
Foot Angle	+0.01	Steep
Fore Udder Att	+1.00	Tight
Rear Udder Ht	+1.26	Very High
Udder Support	-0.03	Strong
Udder Depth	+0.63	20cm Abve
Front Teat Pl.	-0.33	Close
Teat Length	+0.28	Long
Rear Teat Pl.	-0.39	Close
Teat Pos. Side	+0.80	Apart
Locomotion	+1.00	Excellent
Condition Score	+1.60	High

-2 +2

REGULUS

Winstar AltaRegulus ET BYF CVF POF RDF CDF

HB No: 65003212150609 AI Code: HO6888
 Beta Casein A2A2 Source: USA
 Kappa Casein BB DOB: 06.06.20



MGD: Seagull-Bay Jedi Mirage-ET VG85

HOLSTEIN PRODUCTION	
AHDB Dairy	PTA August 2024
Production Reliability 74%	PLI Reliability 68%
PLI	£703
Milk Kg	+332
Fat Kg	+43.8
Fat %	+0.35
Protein Kg	+24.4
Protein %	+0.16
SCI £519	ACI £651 Rel. 68%
Genomic Young Sire Pedigree Index	

✓ **Components**

✓ **Rump Width**

✓ **+0.35% Fat**

✓ **PLI**

✓ **Strong Robust Cows**

✓ **Udder Attachment**



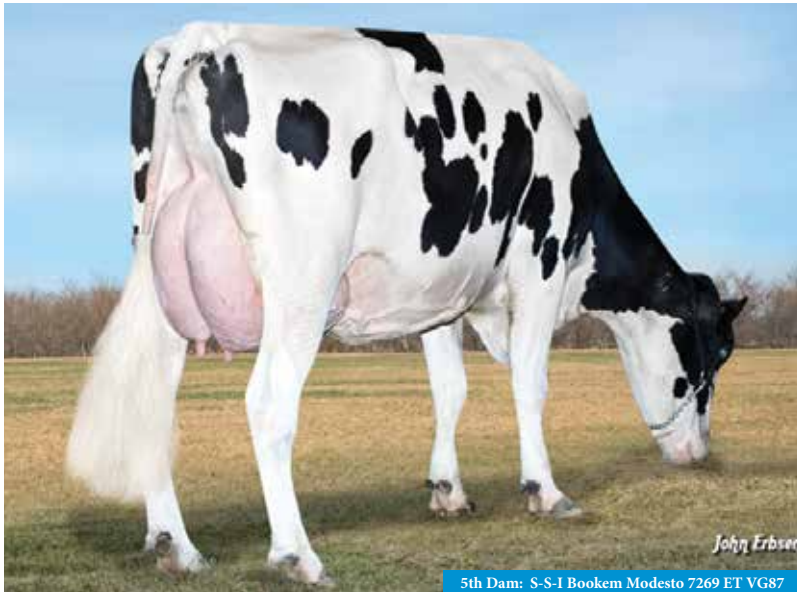
Zazzle X Crimson X Jedi

MANAGEMENT TRAITS		08/24
Healthy Cow Index	£181	Improver
Enviro Cow Index	+3.2	Improver
Fertility Index	+5.0	Improver
Lifespan	+88	Improver
Somatic Cell Count	-21	Improver
Mastitis	-1	Improver
TB Advantage	+1.2	Desirable
Lameness Index	+2.2	Improver
Maintenance	+3	Desirable
Calf Survival	+3.7	Improver
Direct Calving Ease	-0.6	Easy
Mat. Calving Ease	+1.1	Easy
Gestation Length	-1	Shorter
Digital Dermatitis	+0.2	Improver
Dairy Carcase	+0.4	Improver
Feed Advantage	+50	Improver
Temperament	+0.05	Good
Ease of Milk	+0.88	Fast

Below Average Average Above Average

HOLSTEIN CONFORMATION		HUKI 08/24
Young Genomic Pedigree Index		58% Reliability
Type Merit	-0.47	Excellent
Mammary	+0.64	Excellent
Legs & Feet	-0.42	Excellent
Stature	+0.49	160 cm
Chest Width	-0.27	Wide
Body Depth	-1.04	Deep
Angularity	-0.20	Open Rib
Rump Angle	+1.03	Low Pins
Rump Width	+0.61	Wide
Rear Leg Side	-0.61	Sickled
Foot Angle	+0.60	Steep
Fore Udder Att	+1.07	Tight
Rear Udder Ht	-0.24	Very High
Udder Support	-0.30	Strong
Udder Depth	+1.40	20cm Above
Front Teat Pl.	+0.31	Close
Teat Length	+0.14	Long
Rear Teat Pl.	+0.22	Close
Teat Pos. Side	-0.69	Apart
Locomotion	-0.25	Excellent
Condition Score	-0.18	High

-2 +2



5th Dam: S-S-I Bookem Modesto 7269 ET VG87

HOLSTEIN PRODUCTION	
AHDB Dairy	PTA August 2024
Production Reliability 73%	PLI Reliability 67%
PLI	£670
Milk Kg	+797
Fat Kg	+33.5
Fat %	+0.02
Protein Kg	+28.8
Protein %	+0.03
SCI £433	ACI £576 Rel. 67%
Genomic Young Sire Pedigree Index	

- ✓ **All Round Production**
- ✓ **Excellent Management Traits**
- ✓ **11 Generations of VG / EX Dams**

- ✓ **Calving Ease**
- ✓ **Daughter Fertility**
- ✓ **Strong Robust Cows**

SYNETICS

Magnifique X Pursuit X Medley

MANAGEMENT TRAITS		08/24
Healthy Cow Index	£178	Improver
Enviro Cow Index	+3.2	Improver
Fertility Index	+7.6	Improver
Lifespan	+113	Improver
Somatic Cell Count	-16	Improver
Mastitis	-1	Improver
TB Advantage	+2.1	Desirable
Lameness Index	+0.6	Improver
Maintenance	+2	Desirable
Calf Survival	+0.6	Improver
Direct Calving Ease	+0.2	Easy
Mat. Calving Ease	+1.1	Easy
Gestation Length	-2	Shorter
Digital Dermatitis	+0.0	Improver
Dairy Carcase	+0.6	Improver
Feed Advantage	+95	Improver
Temperament	+0.05	Good
Ease of Milk	+0.50	Fast

Below Average Average Above Average

HOLSTEIN CONFORMATION		HUKI 08/24
Young Genomic Pedigree Index		55% Reliability
Type Merit	+0.35	Excellent
Mammary	+0.75	Excellent
Legs & Feet	+0.36	Excellent
Stature	-0.18	160 cm
Chest Width	+0.54	Wide
Body Depth	-0.47	Deep
Angularity	-0.08	Open Rib
Rump Angle	+1.38	Low Pins
Rump Width	+0.55	Wide
Rear Leg Side	+0.41	Sickled
Foot Angle	-0.21	Steep
Fore Udder Att	-0.20	Tight
Rear Udder Ht	+0.34	Very High
Udder Support	+0.70	Strong
Udder Depth	+0.06	20cm Above
Front Teat Pl.	+0.58	Close
Teat Length	-0.16	Long
Rear Teat Pl.	+1.35	Close
Teat Pos. Side	+1.38	Apart
Locomotion	+0.36	Excellent
Condition Score	+1.05	High

-2 +2

SKOVLY P

VH Slatt Skovly P BLF BYF CVF POC CDF

HB No: 6100000261780 AI Code: HO7345
 Beta Casein A2A2 Source: Denmark
 Kappa Casein BB DOB: 27.05.20



HOLSTEIN PRODUCTION	
AHDB Dairy	PTA August 2024
Production Reliability 73%	PLI Reliability 67%
PLI	£570
Milk Kg	+416
Fat Kg	+26.9
Fat %	+0.12
Protein Kg	+24.1
Protein %	+0.12
SCI £437	ACI £531 Rel. 67%
Genomic Young Sire Pedigree Index	

- ✓ **Components**
- ✓ **Improves Milking Speed**
- ✓ **Fertility Index**
- ✓ **Outcross Pedigree**
- ✓ **Udders**
- ✓ **Teat Length**



Slatt P X Nerd RC X Balisto

MANAGEMENT TRAITS		08/24
Healthy Cow Index	£158	Improver
Enviro Cow Index	+2.2	Improver
Fertility Index	+7.3	Improver
Lifespan	+37	Improver
Somatic Cell Count	-11	Improver
Mastitis	-1	Improver
TB Advantage	+1.7	Desirable
Lameness Index	1.9	Improver
Maintenance	+1	Desirable
Calf Survival	+0.7	Improver
Direct Calving Ease	+0.2	Easy
Mat. Calving Ease	+1.0	Easy
Gestation Length	-1	Shorter
Digital Dermatitis	+0.4	Improver
Dairy Carcase	+0.9	Improver
Feed Advantage	+20	Improver
Temperament	-0.45	Good
Ease of Milk	+1.27	Fast

Below Average Average Above Average

HOLSTEIN CONFORMATION		HUKI 08/24
Young Genomic Pedigree Index		54% Reliability
Type Merit	+0.85	Excellent
Mammary	+1.23	Excellent
Legs & Feet	+1.01	Excellent
Stature	+0.69	160 cm
Chest Width	-0.67	Wide
Body Depth	-0.65	Deep
Angularity	+0.61	Open Rib
Rump Angle	-0.81	Low Pins
Rump Width	+1.06	Wide
Rear Leg Side	+0.01	Sickled
Foot Angle	+0.65	Steep
Fore Udder Att	+1.17	Tight
Rear Udder Ht	+1.27	Very High
Udder Support	+0.44	Strong
Udder Depth	+2.00	20cm Above
Front Teat Pl.	+0.48	Close
Teat Length	+0.43	Long
Rear Teat Pl.	+1.09	Close
Teat Pos. Side	+0.52	Apart
Locomotion	+0.59	Excellent
Condition Score	+0.60	High

-2 +2

SULIEN

Peak AltaSulien ET BYF CVF POF RDF CDF

Sexed and Conventional

Daughter Proven

HB No: 65003209641528 AI Code: HO7429
 Beta Casein A1A2 Source: USA
 Kappa Casein AB DOB: 26.10.19



Daughter of Sulien

HOLSTEIN PRODUCTION	
AHDB Dairy	PTA August 2024
Production Reliability 84%	PLI Reliability 77%
PLI	£622
Milk Kg	+343
Fat Kg	+27.6
Fat %	+0.16
Protein Kg	+24.6
Protein %	+0.15
SCI £456	ACI £567 Rel. 77%
Daughter Proven - 269 Daughters in 78 Herds	

- ✓ **Robotic Milking**
- ✓ **Longevity Improver**
- ✓ **Excellent Legs + Feet**
- ✓ **Management Traits**
- ✓ **Components**
- ✓ **Locomotion**

Pursuit X Robson X Denver

MANAGEMENT TRAITS		08/24
Healthy Cow Index	£174	Improver
Enviro Cow Index	+3.0	Improver
Fertility Index	+4.6	Improver
Lifespan	+107	Improver
Somatic Cell Count	-116	Improver
Mastitis	-3	Improver
TB Advantage	+2.3	Desirable
Lameness Index	+2.0	Improver
Maintenance	-2	Desirable
Calf Survival	+0.3	Improver
Direct Calving Ease	-0.3	Easy
Mat. Calving Ease	+0.7	Easy
Gestation Length	+0	Shorter
Digital Dermatitis	+0.4	Improver
Dairy Carcase	+0.8	Improver
Feed Advantage	+69	Improver
Temperament	+0.64	Good
Ease of Milk	+0.83	Fast

Below Average Average Above Average



HOLSTEIN CONFORMATION		HUKI 08/24
Interbull Type Proof		69% Reliability, 69 Daughters in 16 Herds
Type Merit	+0.74	Excellent
Mammary	+0.22	Excellent
Legs & Feet	+1.08	Excellent
Stature	-0.32	160 cm
Chest Width	+0.21	Wide
Body Depth	-0.39	Deep
Angularity	+0.16	Open Rib
Rump Angle	+0.23	Low Pins
Rump Width	+0.43	Wide
Rear Leg Side	+0.99	Sickled
Foot Angle	-0.97	Steep
Fore Udder Att	-0.31	Tight
Rear Udder Ht	--0.26	Very High
Udder Support	-0.45	Strong
Udder Depth	-0.26	20cm Abve
Front Teat Pl.	-0.09	Close
Teat Length	+0.39	Long
Rear Teat Pl.	-0.40	Close
Teat Pos. Side	+0.93	Apart
Locomotion	+1.84	Excellent
Condition Score	-0.17	High

-2 +2



HOLSTEIN PRODUCTION	
AHDB Dairy	PTA August 2024
Production Reliability 73%	PLI Reliability 67%
PLI	£726
Milk Kg	+656
Fat Kg	+44.7
Fat %	+0.21
Protein Kg	+30.0
Protein %	+0.09
SCI £459	ACI £603 Rel. 67%
Genomic Young Sire Pedigree Index	

- ✓ **Strong Robust Cows**
- ✓ **Milking Speed**
- ✓ **Improves Rump Width**
- ✓ **Udders**
- ✓ **Component Specialist**
- ✓ **Lowers SCC**

SYNETICS

Magnifique X Zazzle X Lawson

MANAGEMENT TRAITS		08/24
Healthy Cow Index	£172	Improver
Enviro Cow Index	+3.3	Improver
Fertility Index	+4.8	Improver
Lifespan	+92	Improver
Somatic Cell Count	-19	Improver
Mastitis	-1	Improver
TB Advantage	+2.1	Desirable
Lameness Index	+1.9	Improver
Maintenance	+13	Desirable
Calf Survival	+1.2	Improver
Direct Calving Ease	+0.3	Easy
Mat. Calving Ease	+1.2	Easy
Gestation Length	-4	Shorter
Digital Dermatitis	+0.3	Improver
Dairy Carcase	+0.1	Improver
Feed Advantage	+48	Improver
Temperament	-0.01	Good
Ease of Milk	+0.63	Fast

Below Average Average Above Average

HOLSTEIN CONFORMATION		HUKI 08/24
Young Genomic Pedigree Index		55% Reliability
Type Merit	+0.53	Excellent
Mammary	+0.89	Excellent
Legs & Feet	+0.52	Excellent
Stature	+0.78	160 cm
Chest Width	+1.12	Wide
Body Depth	+0.64	Deep
Angularity	+0.85	Open Rib
Rump Angle	+1.58	Low Pins
Rump Width	+1.43	Wide
Rear Leg Side	+0.80	Sickled
Foot Angle	-0.38	Steep
Fore Udder Att	+1.01	Tight
Rear Udder Ht	+0.67	Very High
Udder Support	-0.04	Strong
Udder Depth	+0.70	20cm Above
Front Teat Pl.	+1.02	Close
Teat Length	-0.31	Long
Rear Teat Pl.	+0.89	Close
Teat Pos. Side	-0.34	Apart
Locomotion	+0.60	Excellent
Condition Score	+0.04	High

-2 +2

THUNDERBIRD

Peak AltaThunderbird

HB No: 65003250026269 AI Code:
 Beta Casein A2A2 Source: USA
 Kappa Casein BB DOB: 21.02.23



HOLSTEIN PRODUCTION	
AHDB Dairy	PTA August 2024
Production Reliability 73%	PLI Reliability 67%
PLI	£685
Milk Kg	+608
Fat Kg	+43.1
Fat %	+0.21
Protein Kg	+30.5
Protein %	+0.12
SCI £435	ACI £565 Rel. 67%
Genomic Young Sire Pedigree Index	

- ✓ **Balanced Production with Type**
- ✓ **Exciting Pedigree**
- ✓ **Increases Stature with Strength**
- ✓ **Improves Components**
- ✓ **Positive Teat Length**
- ✓ **Recommended for improving Locomotion**



Perfect X Magnifique X Zazzle

MANAGEMENT TRAITS		08/24
Healthy Cow Index	£145	Improver
Enviro Cow Index	+3.1	Improver
Fertility Index	+4.6	Improver
Lifespan	+82	Improver
Somatic Cell Count	-5	Improver
Mastitis	-1	Improver
TB Advantage	+2.8	Desirable
Lameness Index	+1.0	Improver
Maintenance	+14	Desirable
Calf Survival	-0.4	Improver
Direct Calving Ease	-0.2	Easy
Mat. Calving Ease	+1.5	Easy
Gestation Length	-1	Shorter
Digital Dermatitis	+0.1	Improver
Dairy Carcase	+0.0	Improver
Feed Advantage	+17	Improver
Temperament	-0.06	Good
Ease of Milk	+1.03	Fast

Below Average Average Above Average

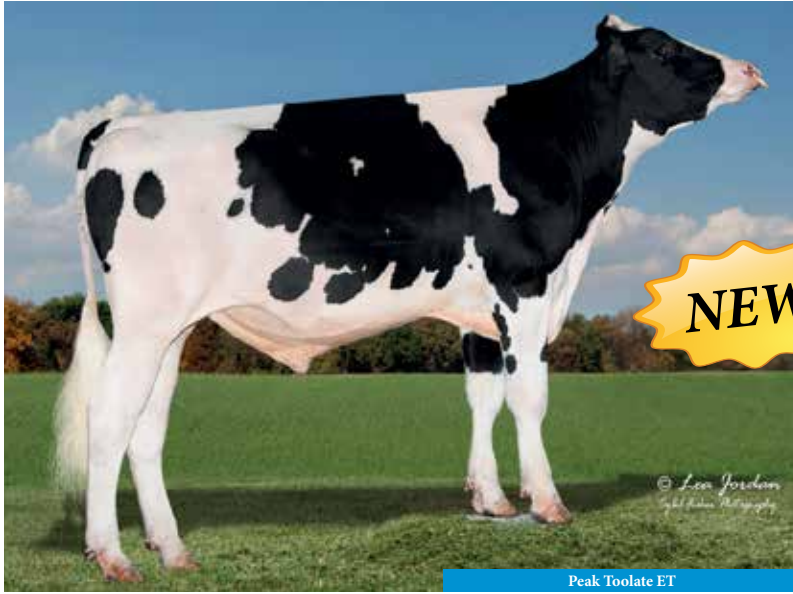
HOLSTEIN CONFORMATION		HUKI 08/24
Young Genomic Pedigree Index		55% Reliability
Type Merit	+1.93	Excellent
Mammary	+1.46	Excellent
Legs & Feet	+1.53	Excellent
Stature	+0.99	160 cm
Chest Width	+1.20	Wide
Body Depth	+1.01	Deep
Angularity	+1.34	Open Rib
Rump Angle	-0.25	Low Pins
Rump Width	+2.52	Wide
Rear Leg Side	+0.28	Sickled
Foot Angle	+0.55	Steep
Fore Udder Att	+1.07	Tight
Rear Udder Ht	+0.72	Very High
Udder Support	+0.52	Strong
Udder Depth	+0.47	20cm Above
Front Teat Pl.	+1.24	Close
Teat Length	+0.36	Long
Rear Teat Pl.	+0.86	Close
Teat Pos. Side	+0.34	Apart
Locomotion	+1.75	Excellent
Condition Score	-0.43	High

-2 +2

TOOLATE

Peak Toolate ET BLF BYF CVF DPF CDF

HB No: 65003251555516 AI Code: HO7914
 Beta Casein A1A1 Source: USA
 Kappa Casein AB DOB: 11.08.22



HOLSTEIN PRODUCTION	
AHDB Dairy	PTA August 2024
Production Reliability 72%	PLI Reliability 66%
PLI	£804
Milk Kg	+751
Fat Kg	+51.9
Fat %	+0.24
Protein Kg	+32.7
Protein %	+0.09
SCI £563	ACI £692 Rel. 66%
Genomic Young Sire Pedigree Index	

✓ **All Round Milk and Component Specialist**

✓ **+7.3 Daughter Fertility**

✓ **11 Generations of VG/EX DAMs**

✓ **+84.6 Kgs Fat + Protein**

✓ **Ranks highly in both PLI and TPI**

✓ **+0.24% Fat**

SYNETICS

Kevlow X Breakdown X Pursuit

MANAGEMENT TRAITS		08/24
Healthy Cow Index	£171	Improver
Enviro Cow Index	+3.7	Improver
Fertility Index	+7.3	Improver
Lifespan	+79	Improver
Somatic Cell Count	-24	Improver
Mastitis	-2	Improver
TB Advantage	+3.3	Desirable
Lameness Index	+2.4	Improver
Maintenance	-2	Desirable
Calf Survival	-1.2	Improver
Direct Calving Ease	+0.0	Easy
Mat. Calving Ease	+0.9	Easy
Gestation Length	-3	Shorter
Digital Dermatitis	+0.3	Improver
Dairy Carcase	+0.8	Improver
Feed Advantage	+94	Improver
Temperament	+0.62	Good
Ease of Milk	-0.30	Fast

Below Average Average Above Average

HOLSTEIN CONFORMATION		HUKI 08/24
Young Genomic Pedigree Index		53% Reliability
Type Merit	+0.24	Excellent
Mammary	+0.67	Excellent
Legs & Feet	+0.22	Excellent
Stature	+0.27	160 cm
Chest Width	-0.59	Wide
Body Depth	-0.95	Deep
Angularity	+0.47	Open Rib
Rump Angle	-0.80	Low Pins
Rump Width	+0.25	Wide
Rear Leg Side	+0.24	Sickled
Foot Angle	+0.34	Steep
Fore Udder Att	+0.62	Tight
Rear Udder Ht	+0.40	Very High
Udder Support	+0.41	Strong
Udder Depth	+0.32	20cm Above
Front Teat Pl.	+0.28	Close
Teat Length	-0.28	Long
Rear Teat Pl.	+0.08	Close
Teat Pos. Side	+0.85	Apart
Locomotion	+0.63	Excellent
Condition Score	-0.38	High

-2 +2

VANCE

Progenesis Vance ET BLF BYF CVF DPF CDF

HB No: 65003252197819 AI Code: HO7864
 Beta Casein A2A2 Source: USA
 Kappa Casein BB DOB: 16.08.22



HOLSTEIN PRODUCTION	
AHDB Dairy	PTA August 2024
Production Reliability 72%	PLI Reliability 66%
PLI	£794
Milk Kg	+872
Fat Kg	+45.6
Fat %	+0.12
Protein Kg	+38.1
Protein %	+0.10
SCI £504	ACI £638 Rel. 66%
Genomic Young Sire Pedigree Index	

- ✓ **Top Production Sire**
+872 Kg Milk
- ✓ **Great daughter fertility**
- ✓ **+84 Kg Fat + Protein**
- ✓ **Excellent Locomotion**
- ✓ **Exceptional in all**
Type traits
- ✓ **Snugly attached Udders**



Holysmokes X Plinko X Crimson

MANAGEMENT TRAITS		08/24
Healthy Cow Index	£136	Improver
Enviro Cow Index	+3.7	Improver
Fertility Index	+5.8	Improver
Lifespan	+52	Improver
Somatic Cell Count	-16	Improver
Mastitis	-1	Improver
TB Advantage	+1.9	Desirable
Lameness Index	+1.8	Improver
Maintenance	+6	Desirable
Calf Survival	-0.2	Improver
Direct Calving Ease	-0.6	Easy
Mat. Calving Ease	+1.0	Easy
Gestation Length	-1	Shorter
Digital Dermatitis	+0.4	Improver
Dairy Carcase	+1.7	Improver
Feed Advantage	+102	Improver
Temperament	-0.16	Good
Ease of Milk	-0.87	Fast

Below Average Average Above Average

HOLSTEIN CONFORMATION		HUKI 08/24
Young Genomic Pedigree Index		53% Reliability
Type Merit	+1.05	Excellent
Mammary	+0.81	Excellent
Legs & Feet	+0.70	Excellent
Stature	+0.52	160 cm
Chest Width	+0.50	Wide
Body Depth	+0.44	Deep
Angularity	+1.07	Open Rib
Rump Angle	+0.29	Low Pins
Rump Width	+0.28	Wide
Rear Leg Side	+0.06	Sickled
Foot Angle	+0.53	Steep
Fore Udder Att	+0.50	Tight
Rear Udder Ht	+0.95	Very High
Udder Support	+0.61	Strong
Udder Depth	-0.06	20cm Abve
Front Teat Pl.	+0.29	Close
Teat Length	-0.10	Long
Rear Teat Pl.	+1.09	Close
Teat Pos. Side	+1.22	Apart
Locomotion	+1.07	Excellent
Condition Score	-0.10	High

-2 +2

VANDYKE

Progenesis AltaVandyke ET BLF BYF CVF DPF CDF

HB No: 65003247843547 AI Code: HO7876
 Beta Casein A2A2 Source: USA
 Kappa Casein BB DOB: 20.04.22



Paternal 4th Dam: Clear-Echo Ovation ET

HOLSTEIN PRODUCTION	
AHDB Dairy	PTA August 2024
Production Reliability 73%	PLI Reliability 66%
PLI	£822
Milk Kg	+888
Fat Kg	+53.3
Fat %	+0.19
Protein Kg	+35.7
Protein %	+0.07
SCI £504	ACI £661 Rel. 66%
Genomic Young Sire Pedigree Index	

✓ **+89 Kg Fat + Protein** ✓ **Sire of Sons**

✓ **+888 Kgs Milk**

✓ **Improves all Management traits**

✓ **High PLI Sire**

✓ **Recommended for Robotic Milking**



Zemini X Plinko X Crimson

MANAGEMENT TRAITS		08/24
Healthy Cow Index	£143	Improver
Enviro Cow Index	+4.2	Improver
Fertility Index	+1.1	Improver
Lifespan	+101	Improver
Somatic Cell Count	-26	Improver
Mastitis	-1	Improver
TB Advantage	+3.2	Desirable
Lameness Index	+3.2	Improver
Maintenance	+0	Desirable
Calf Survival	+0.8	Improver
Direct Calving Ease	-0.3	Easy
Mat. Calving Ease	+0.9	Easy
Gestation Length	-3	Shorter
Digital Dermatitis	+0.7	Improver
Dairy Carcase	+1.0	Improver
Feed Advantage	+141	Improver
Temperament	+0.08	Good
Ease of Milk	+0.24	Fast

Below Average Average Above Average

HOLSTEIN CONFORMATION		HUKI 08/24
Young Genomic Pedigree Index		53% Reliability
Type Merit	-0.03	Excellent
Mammary	+0.24	Excellent
Legs & Feet	+0.10	Excellent
Stature	+0.30	160 cm
Chest Width	-0.30	Wide
Body Depth	-1.11	Deep
Angularity	+0.37	Open Rib
Rump Angle	+0.55	Low Pins
Rump Width	+0.51	Wide
Rear Leg Side	+0.69	Sickled
Foot Angle	-0.42	Steep
Fore Udder Att	+0.34	Tight
Rear Udder Ht	-0.01	Very High
Udder Support	-0.32	Strong
Udder Depth	+0.39	20cm Above
Front Teat Pl.	-1.05	Close
Teat Length	+0.41	Long
Rear Teat Pl.	-0.84	Close
Teat Pos. Side	-0.07	Apart
Locomotion	+0.63	Excellent
Condition Score	-0.81	High

-2 +2

EMBRYO TRANSFER

ARE YOU LOOKING TO

Speed up genetic improvement

Increase the number of calves from genetically superior cows

Incorporate new genetics into your herd without the cost of moving live animals

Maximize the genetic potential of cows with compromised fertility status

Dairy, Beef, Pedigree and Commercial farmers can all benefit significantly from this technology

SPEAK TO OUR TEAM TODAY



SOME OF OUR SERVICES

- Leading Genetics
- Breeding Advice
- Stud Facilities
- Scanning Service
- Embryo Transfer
- Liquid Nitrogen

AI Services
Ballycraig
671 Antrim Road
Newtownabbey
Co. Antrim
BT36 4RL

Phone: +44 (028) 9083 3123
Website: www.ai-services.co.uk



WHEELHOUSE

Peak Wheelhouse ET BLF BYF CVF RDF CDF

Daughter Proven

HB No: 65003209641362 AI Code: HO6603
 Beta Casein A2A2 Source: USA
 Kappa Casein AB DOB: 09.02.19



3D: Bryhill Ransom Marquise -ET

HOLSTEIN PRODUCTION

AHDB Dairy PTA August 2024
 Production Reliability 90% PLI Reliability 84%

PLI	£579
Milk Kg	+771
Fat Kg	+35.9
Fat %	+0.05
Protein Kg	+27.6
Protein %	+0.02
SCI £369	ACI £498 Rel. 68%
Daughter Proven - 1471 Daughters in 255 Herds	

✓ **Daughter Proven**

✓ **Increases Rump and Chest Width**

✓ **Production**

✓ **Daughter Fertility**

✓ **Lowers Rump Angle**

✓ **Improves all Management Traits**



Pursuit X Duke X Rubicon

MANAGEMENT TRAITS		08/24
Healthy Cow Index	£132	Improver
Enviro Cow Index	+2.6	Improver
Fertility Index	+6.1	Improver
Lifespan	+82	Improver
Somatic Cell Count	-10	Improver
Mastitis	-1	Improver
TB Advantage	+1.8	Desirable
Lameness Index	+2.1	Improver
Maintenance	+10	Desirable
Calf Survival	-0.9	Improver
Direct Calving Ease	+0.3	Easy
Mat. Calving Ease	+1.9	Easy
Gestation Length	-1	Shorter
Digital Dermatitis	+0.2	Improver
Dairy Carcase	+1.5	Improver
Feed Advantage	+7	Improver
Temperament	+0.78	Good
Ease of Milk	+0.68	Fast

Below Average Average Above Average

HOLSTEIN CONFORMATION

Interbull Type Proof HUKI 08/24
 78% Reliability, 444 Daughters in 92 Herds

Type Merit	+0.09	Excellent
Mammary	+0.82	Excellent
Legs & Feet	-0.21	Excellent
Stature	+0.20	160 cm
Chest Width	+1.46	Wide
Body Depth	+0.29	Deep
Angularity	+0.32	Open Rib
Rump Angle	+2.18	Low Pins
Rump Width	+2.58	Wide
Rear Leg Side	-0.06	Sickled
Foot Angle	-1.11	Steep
Fore Udder Att	-0.38	Tight
Rear Udder Ht	+0.81	Very High
Udder Support	-0.08	Strong
Udder Depth	-0.14	20cm Above
Front Teat Pl.	+0.77	Close
Teat Length	-1.51	Long
Rear Teat Pl.	+1.42	Close
Teat Pos. Side	+1.13	Apart
Locomotion	-0.04	Excellent
Condition Score	+0.67	High

-2 +2

MAZ RED PP

SYNETICS

HB No: 60001406595449 AI Code: HO7913
 Beta Casein A1A2 Source: Germany
 Kappa Casein AB DOB: 25.05.22

Sha Maz Red PP ET BLF BYF CVF POS CDF

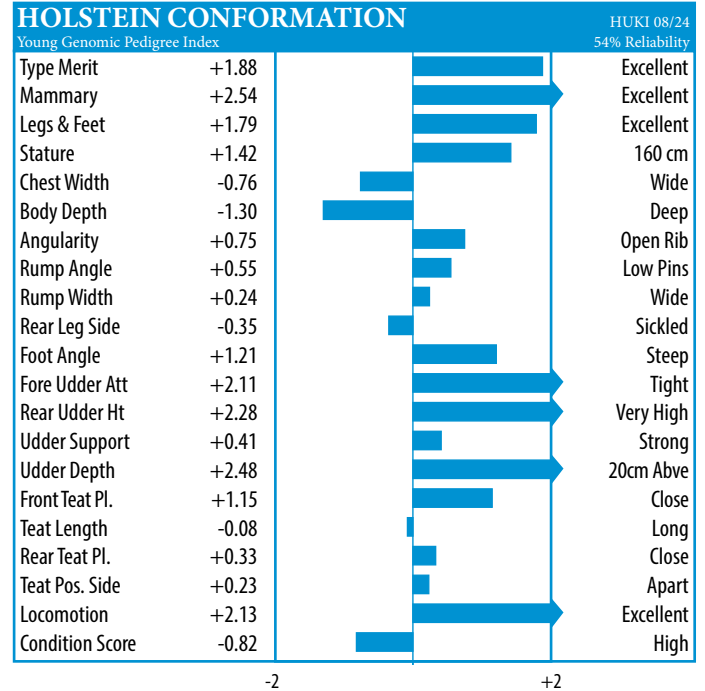
McDonald P X Solitair P X Pace Red



Polled

Udders

HOLSTEIN PRODUCTION			
AHDB Dairy Production Reliability 73%		PTA August 2024 PLI Reliability 66%	
PLI	£428	Milk Kg	+405
Fat Kg	+24.4	Fat %	+0.09
Protein Kg	+16.9	Protein %	+0.04
SCI £264	ACI £375	Rel. 66%	
Genomic Young Sire Pedigree Index			



MANAGEMENT TRAITS 08/24

Fertility Index	+0.6	Dir. Calving Ease	+0.3
Lifespan	+79	Temperament	+0.91
Somatic Cell Ct	-19	Ease of Milk	+1.04

PROMISE RED

SYNETICS

HB No: 63000947702687 AI Code: HO7743
 Beta Casein A2A2 Source: Holland
 Kappa Casein AB DOB: 22.05.22

Promise Red ET BLF BYF CVF CDF

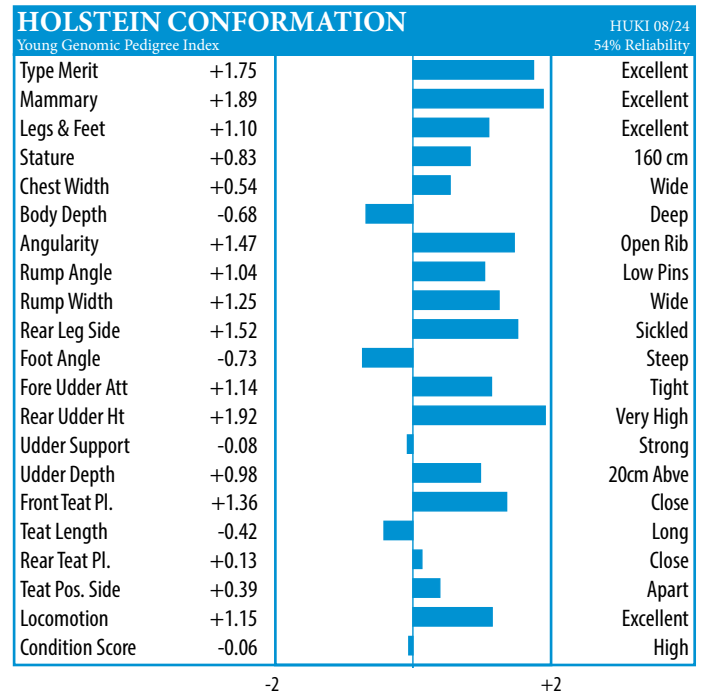
Starranger X Riveting X Mr Salvador



Type

Production

HOLSTEIN PRODUCTION			
AHDB Dairy Production Reliability 73%		PTA August 2024 PLI Reliability 66%	
PLI	£642	Milk Kg	+852
Fat Kg	+23.2	Fat %	-0.12
Protein Kg	+29.5	Protein %	+0.02
SCI £356	ACI £514	Rel. 66%	
Genomic Young Sire Pedigree Index			



MANAGEMENT TRAITS 08/24

Fertility Index	+5.8	Dir. Calving Ease	-0.4
Lifespan	+140	Temperament	+0.12
Somatic Cell Ct	-22	Ease of Milk	+0.07

RAE BAN



HB No: 65003261835770 AI Code: USA
 Beta Casein A1A2 Source: 09.12.22
 Kappa Casein AB DOB:

Trent-Way Rae Ban Red ET BLF BYF CVF DPF POF CDF

Network X Altuve X Resolve



Show Type Dam 14193 Kgs 305 Days

HOLSTEIN PRODUCTION			
AHDB Dairy		PTA August 2024	
Production Reliability 72%		PLI Reliability 66%	
PLI	£500	Milk Kg	+806
Fat Kg	+27.1	Fat %	-0.06
Protein Kg	+25.7	Protein %	-0.01
SCI £264	ACI £400	Rel. 66%	
Genomic Young Sire Pedigree Index			

HOLSTEIN CONFORMATION			HUK1 08/24
Young Genomic Pedigree Index			53% Reliability
Type Merit	+1.09		Excellent
Mammary	+0.68		Excellent
Legs & Feet	+0.92		Excellent
Stature	+0.70		160 cm
Chest Width	+0.37		Wide
Body Depth	+0.56		Deep
Angularity	+1.34		Open Rib
Rump Angle	-0.19		Low Pins
Rump Width	+0.44		Wide
Rear Leg Side	+0.76		Sickled
Foot Angle	-0.20		Steep
Fore Udder Att	+0.32		Tight
Rear Udder Ht	+0.90		Very High
Udder Support	+0.33		Strong
Udder Depth	-0.51		20cm Above
Front Teat Pl.	+0.80		Close
Teat Length	+0.32		Long
Rear Teat Pl.	+0.42		Close
Teat Pos. Side	+0.16		Apart
Locomotion	+1.09		Excellent
Condition Score	-0.43		High

MANAGEMENT TRAITS				08/24
Fertility Index	-0.1	Dir. Calving Ease	+0.5	
Lifespan	+76	Temperament	+0.57	
Somatic Cell Ct	-12	Ease of Milk	+0.43	

RUTILANT RED



HB No: 63000549118594 AI Code: HO7519
 Beta Casein A1A1 Source: Holland
 Kappa Casein BB DOB: 14.03.21

Koepon AltaRutilant Red ET

Sputnik X Altuve X Salvatore



High Production Fertility

HOLSTEIN PRODUCTION			
AHDB Dairy		PTA August 2024	
Production Reliability 73%		PLI Reliability 66%	
PLI	£663	Milk Kg	+1049
Fat Kg	+35.2	Fat %	-0.07
Protein Kg	+31.5	Protein %	-0.03
SCI £378	ACI £533	Rel. 66%	
Genomic Young Sire Pedigree Index			

HOLSTEIN CONFORMATION			HUK1 08/24
Young Genomic Pedigree Index			54% Reliability
Type Merit	+0.72		Excellent
Mammary	+0.47		Excellent
Legs & Feet	+1.41		Excellent
Stature	+0.07		160 cm
Chest Width	-0.04		Wide
Body Depth	-0.58		Deep
Angularity	+0.55		Open Rib
Rump Angle	+1.60		Low Pins
Rump Width	+0.66		Wide
Rear Leg Side	+0.24		Sickled
Foot Angle	+0.07		Steep
Fore Udder Att	+0.07		Tight
Rear Udder Ht	+1.17		Very High
Udder Support	-0.27		Strong
Udder Depth	-0.02		20cm Above
Front Teat Pl.	+1.08		Close
Teat Length	+0.12		Long
Rear Teat Pl.	+0.75		Close
Teat Pos. Side	-0.04		Apart
Locomotion	+1.32		Excellent
Condition Score	+0.50		High

MANAGEMENT TRAITS				08/24
Fertility Index	+2.3	Dir. Calving Ease	-0.8	
Lifespan	+110	Temperament	+0.09	
Somatic Cell Ct	-26	Ease of Milk	-0.53	

ROCKET

ABERDEEN ANGUS
Thrunton Rocket L282

Sire: Netherallan Peter Pershore
Dam: Lakewood Rhapsody Z001

HB No: UK106935301282
DOB: 04.06.11



One of the all time great sires in the breed

Exceptional growth and muscling displayed in the progeny

Recommended sire for crossing on most dairy breeds

AUGUST 2024 ABERDEEN ANGUS BREEDPLAN EBVs

EBV	Calv Ease Direct %	Calv Ease Dtrs %	Gest. Len. Days	Birth Wt Kg	200 Day Wt Kg	400 Day Wt Kg	600 Day Wt Kg	Mature Cow Wt Kg	Milk Kg	Scrotal Size cm	Carc. Wt Kg	Eye Mus Area cm ²	Fat Depth mm	Retail Beef Yield %	IMF %	Angus Terminal Index GBP	Angus S-Rep Index GBP
EBV	-0.4	+2.3	+0.3	+3.3	+43	+81	+107	+94	+11	+0.0	+74	+4.1	-2.9	+1.6	+0.2	+39	+57
Breed Average EBVs for 2022 Born Calves																	
EBV	-1.0	+0.4	+0.3	+3.4	+43	+78	+96	+88	+14	+1.1	+62	+4.2	-1.5	+1.1	+0.2	+36	+49

CALVING SURVEY

Total Surveys	214
138 cows and 76 heifers	
Mortality	1.9 %
Avg Gestation Days	284
Size	Average 77.2 %
	Above Average 19.8 %
Conformation	Average 77.6 %
	Above Average 21.9 %
Non Surgical Vet Assistance	2.4 %
Surgical Vet Assistance	1.0 %

GRENADE

ABERDEEN ANGUS
HW Grenade

Sire: Netherton Kraker
Dam: Mohmar Gammer Eulanne

HB No: UK546977102535
DOB: 01.03.19



Impressive Growth and Muscle Index

Smooth fleshing sire with excellent Muscling

Suitable for breeding suckler replacements

Progeny displaying conformation and quality

AUGUST 2024 ABERDEEN ANGUS BREEDPLAN EBVs

EBV	Calv Ease Direct %	Calv Ease Dtrs %	Gest. Len. Days	Birth Wt Kg	200 Day Wt Kg	400 Day Wt Kg	600 Day Wt Kg	Mature Cow Wt Kg	Milk Kg	Scrotal Size cm	Carc. Wt Kg	Eye Mus Area cm ²	Fat Depth mm	Retail Beef Yield %	IMF %	Angus Terminal Index GBP	Angus S-Rep Index GBP
EBV	-0.5	+4.6	+1.9	+3.8	+44	+75	+97	+75	+12	+1.3	+61	+5.2	-0.8	+1.1	+0.4	+36	+54
Breed Average EBVs for 2022 Born Calves																	
EBV	-1.0	+0.4	+0.3	+3.4	+43	+78	+96	+88	+14	+1.1	+62	+4.2	-1.5	+1.1	+0.2	+36	+49

CALVING SURVEY

Total Surveys	99
87 cows and 12 heifers	
Mortality	1.0 %
Avg Gestation Days	286
Size	Average 76.5 %
	Above Average 11.2 %
Conformation	Average 80.4 %
	Above Average 13.4 %
Non Surgical Vet Assistance	1.0 %
Surgical Vet Assistance	2.0 %

EXPLORER

ABERDEEN ANGUS
Drumhill Explorer X354

Sire: Rulesmains Jimo Eric R666
Dam: Drumhill Evora V116

HB No: UK959342704354
DOB: 30.04.21



Explorer is an excellent example of the Breed

Naturally fleshed sire with tremendous muscle and shape

Excels in Growth Performance for 200 - 600 Days

Use only on cows until a detailed calving survey is completed

AUGUST 2024 ABERDEEN ANGUS BREEDPLAN EBVs

EBV	Calv Ease Direct %	Calv Ease Dtrs %	Gest. Len. Days	Birth Wt Kg	200 Day Wt Kg	400 Day Wt Kg	600 Day Wt Kg	Mature Cow Wt Kg	Milk Kg	Scrotal Size cm	Carc. Wt Kg	Eye Mus Area cm2	Fat Depth mm	Retail Beef Yield %	IMF %	Angus Terminal Index GBP	Angus S-Rep Index GBP
EBV	+1.8	+0.7	-0.1	+3.6	+49	+81	+100	+89	+13	+0.5	+68	+3.3	-2.9	+1.6	-0.3	+41	+56
Breed Average EBVs for 2022 Born Calves																	
EBV	-1.0	+0.4	+0.3	+3.4	+43	+78	+96	+88	+14	+1.1	+62	+4.2	-1.5	+1.1	+0.2	+36	+49

PHILO

ABERDEEN ANGUS
Blackhaugh Philo X239

Sire: Quaker Hill Dead Centre
Dam: Blackhaugh Pride V992

HB No: UK562121702239
DOB: 25.04.21



Philo's Sire Dead centre was a heavily proven sire leading the breed for both gestation length and calving ease

Philo ranks in the top 10% of the breed for both Terminal and Self Replacing Index

He ranks in the top 10% of the breed for calving ease

Expect extreme calving ease with low birth weights and quick growth rates

AUGUST 2024 ABERDEEN ANGUS BREEDPLAN EBVs

EBV	Calv Ease Direct %	Calv Ease Dtrs %	Gest. Len. Days	Birth Wt Kg	200 Day Wt Kg	400 Day Wt Kg	600 Day Wt Kg	Mature Cow Wt Kg	Milk Kg	Scrotal Size cm	Carc. Wt Kg	Eye Mus Area cm2	Fat Depth mm	Retail Beef Yield %	IMF %	Angus Terminal Index GBP	Angus S-Rep Index GBP
EBV	+2.1	+6.1	-2.4	+3.9	+66	+116	+135	+108	+16	+1.7	+88	+6.5	-1.1	+1.5	+0.9	+56	+77
Breed Average EBVs for 2022 Born Calves																	
EBV	-1.0	+0.4	+0.3	+3.4	+43	+78	+96	+88	+14	+1.1	+62	+4.2	-1.5	+1.1	+0.2	+36	+49

JUBILANT

BRITISH BLUE
Knockagh Jubilant

Sire: Twyning Ash Ukelele
Dam: Knockagh Fancy Pants

HB No: B-20141285
Ear No: UK902043409434
DOB: 04.12.14



Twyning Ash Ukelele, sire of Jubilant

Proven calving ease sire for dairy cows

In the top 5% of the breed for Direct Calving Ease

Suitable for crossing on most types of dairy cows

Short gestation length at 284 days

Carries a red factor gene

CALVING SURVEY

Total Surveys	92
88 cows and 4 heifers	
Mortality	1.1 %
Avg Gestation Days	284
Size	Average 73.6 %
Above Average 18.7 %	
Conformation	Average 70.3 %
Above Average 24.2 %	
Non Surgical Vet Assistance	0.0 %
Surgical Vet Assistance	1.1 %

AUGUST 2024 BRITISH BLUE BREEDPLAN EBVs

EBV	Calv Ease Direct %	Calv Ease Dtrs %	Gest. Len. Days	Birth Wt Kg	200 Day Wt Kg	400 Day Wt Kg	600 Day Wt Kg	Mature Cow Wt Kg	Scrotal Size cm	Carc. Wt Kg	Eye Mus Area cm2	Fat Depth mm	Retail Beef Yield %	IMF %	BBB Carcass Profitability Index GBP	BBB Pedigree Breed Index GBP
EBV	+2.5	+1.8	+0.2	+1.3	+14	+25	+35	+33	+0.4	+24	+1.8	-02	+0.7	+0.0	+20	+21
Breed Average EBVs for 2022 Born Calves																
EBV	-1.1	-0.8	+0.4	+2.1	+12	+21	+30	+28	+0.2	+17	+1.5	+0.0	+0.4	+0.1	+11	+5

LUXURY

IRISH BLUE
Boraside Luxury

Sire: Mannequin de Sberchamps
Dam: Boraside Glenda ET

HB No: IE372215083231556
DOB: 15.09.17



Luxury displays impressive breed type

Excellent performance figures for Carcass Weight

Superb muscling throughout

First calves are normal calving and display good colour marking

CALVING SURVEY

Total Surveys	61
58 cows and 3 heifers	
Mortality	0.0 %
Avg Gestation Days	285
Size	Average 77.0 %
Above Average 16.4 %	
Conformation	Average 82.0 %
Above Average 16.4 %	
Non Surgical Vet Assistance	0.0 %
Surgical Vet Assistance	3.3 %

JULY 2024 ICBF EUROSTAR RATINGS

Star Rating Within BB Breed	Replacement Index	Terminal Index	Dairy Beef	Calving Difficulty on Heifers	Calving Difficulty on Cows	Docility	Carcass Weight Kg	Carcass Conformation	Daughter Calving Difficulty	Daughter Milk Kg	Dtr Calving Interval Days
Star Rating Within BB Breed	★★★	★	★			★★	★	★		★★★	★★★★
eurovalue	+€15	+€62	-€8	21.0%	11.8%	+0.14	+27.1	+2.56	7.66%	+5.30	+3.33
Index Reliability %	64	79	80	57	81	57	91	89	76	45	44
Star Rating Across Beef Breeds	★	★★	★			★★★★★	★★★★★	★★★★★		★★★★	★

OLAF

BRITISH BLUE
Chatham Olaf

Sire: Graymar Iceman
Dam: Chatham Millie

HB No: B-20190926
Ear Tag: UK917081839786
DOB: 25.09.19



Olaf has exceptionally high Performance Indexes

Low Birth Weight suggests Calving Ease

Olaf displays style with conformation to match

Olaf displays real muscling and superb fleshing ability

AUGUST 2024 BRITISH BLUE BREEDPLAN EBVs																
EBV	Calv Ease Direct %	Calv Ease Dtrs %	Gest. Len. Days	Birth Wt Kg	200 Day Wt Kg	400 Day Wt Kg	600 Day Wt Kg	Mature Cow Wt Kg	Scrotal Size cm	Carc. Wt Kg	Eye Mus Area cm ²	Fat Depth mm	Retail Beef Yield %	IMF %	BBB Carcase Profitability Index GBP	BBB Pedigree Breed Index GBP
+0.9	-0.4	-0.9	+2.5	+22	+43	+61	+63	+1.2	+33	+1.2	-0.3	+0.4	+0.2	+27	+19	
Breed Average EBVs for 2022 Born Calves																
EBV	-1.1	-0.8	+0.4	+2.1	+12	+21	+30	+28	+0.2	+17	+1.5	+0.0	+0.4	+0.1	+11	+5

CALVING SURVEY	
Total Surveys	27
24 cows and 3 heifers	
Mortality	0.0 %
Avg Gestation Days	288
Size	Average 76.9 %
	Above Average 23.1 %
Conformation	Average 72.0 %
	Above Average 28.0 %
Non Surgical Vet Assistance	3.7 %
Surgical Vet Assistance	0.0 %

RAMBO

BRITISH BLUE
Springhill Rambo

Sire: Woodview Solo
Dam: Ridge Dean Wisdom

HB No: B-20210436
Ear Tag: UK933293500883
DOB: 01.03.21



Rambo displays style and excellent breed type

Outstanding muscling with exceptional hindquarter development

Bred from a proven easy calving line

Use on cows only until a detailed calving survey is completed

AUGUST 2024 BRITISH BLUE BREEDPLAN EBVs																
EBV	Calv Ease Direct %	Calv Ease Dtrs %	Gest. Len. Days	Birth Wt Kg	200 Day Wt Kg	400 Day Wt Kg	600 Day Wt Kg	Mature Cow Wt Kg	Scrotal Size cm	Carc. Wt Kg	Eye Mus Area cm ²	Fat Depth mm	Retail Beef Yield %	IMF %	BBB Carcase Profitability Index GBP	BBB Pedigree Breed Index GBP
-1.6	-1.3	+1.5	+3.0	+13	+16	+25	+21	+0.2	+12	+1.4	+0.2	+0.2	+0.2	+0.2	+9	+1
Breed Average EBVs for 2022 Born Calves																
EBV	-1.1	-0.8	+0.4	+2.1	+12	+21	+30	+28	+0.2	+17	+1.5	+0.0	+0.4	+0.1	+11	+5

ROMEO

HEREFORD
Brookfield 1 Romeo (P) AI

Sire: Normanton 1 Laertes (P) AI ET HB No: UK933287500192
Dam: Graceland 1 Freda (P) DOB: 19.04.18



Sired by one of the best bulls of the breed, winning many championships throughout the United Kingdom

Exceptionally low birth weights are suggested in his EBVs

Locally bred sire

Calves display quality and conformation

CALVING SURVEY

Total Surveys	102
69 cows and 33 heifers	
Mortality	0.0 %
Avg Gestation Days	286
Size	Average 72.8 %
Above Average 18.4 %	
Conformation	Average 71.3 %
Above Average 24.8 %	
Non Surgical Vet Assistance	1.9 %
Surgical Vet Assistance	1.0 %

JULY 2024 HEREFORD BREEDPLAN EBVs

EBV	Calv Ease Direct %	Calv Ease Dtrs %	Gest. Len. Days	Birth Wt Kg	200 Day Wt Kg	400 Day Wt Kg	600 Day Wt Kg	Mature Cow Wt Kg	Milk Kg	Scrotal Size cm	Carc. Wt Kg	Eye Mus Area cm2	Fat Depth mm	Retail Beef Yield %	IMF %	Hereford Terminal Index GBP	Hereford S-Rep Index GBP
EBV	+3.9	+3.1	-0.7	+0.3	+17	+33	+44	+51	+11	+0.8	+34	+2.1	-1.2	+1.7	-1.2	+26	+30
Breed Average EBVs for 2022 Born Calves																	
EBV	-0.1	+0.6	+0.6	+2.5	+29	+53	+66	+62	+7	+0.9	+43	+2.3	-0.1	+0.5	-0.1	+27	+32

WILLYWONKA

HEREFORD
Normanton 1 Willywonka (P)

Sire: Minlacowie Jubilant J123 HB No: UK902033800847
Dam: Normanton 1 Cep 5th R452 DOB: 30.08.21



Purchased at a club Hereford sale in the UK for 5,800 gns (2nd Prize Winner)

Smooth fleshing bull with excellent shape

Willywonka's dam is by the great Hereford sire Normanton 1 Laertes

Use with caution until a detailed calving survey is carried out

JULY 2024 HEREFORD BREEDPLAN EBVs

EBV	Calv Ease Direct %	Calv Ease Dtrs %	Gest. Len. Days	Birth Wt Kg	200 Day Wt Kg	400 Day Wt Kg	600 Day Wt Kg	Mature Cow Wt Kg	Milk Kg	Scrotal Size cm	Carc. Wt Kg	Eye Mus Area cm2	Fat Depth mm	Retail Beef Yield %	IMF %	Hereford Terminal Index GBP	Hereford S-Rep Index GBP
EBV	+3.0	+2.1	-2.3	-0.3	+27	+49	+59	+66	+13	+0.8	+46	+1.8	-2.2	+1.5	-0.5	+29	+34
Breed Average EBVs for 2022 Born Calves																	
EBV	-0.1	+0.6	+0.6	+2.5	+29	+53	+66	+62	+7	+0.9	+43	+2.3	-0.1	+0.5	-0.1	+27	+32

MARTY

LIMOUSIN
Ampertaine Ifor

Sire: Ampertaine Foreman
Dam: Ampertaine Vera

Ear Tag: UK 9564385/889-7
HB No: MGD13-8897
DOB: 26.09.13



Superb Limousin sire by the 38,000 gns sire, Ampertaine Foreman

Excellent well balanced bull with impressive muscle and shape

Suitable for pedigree breeding

Widespread Calving Survey completed

BLUP Date 10.05.24	Birth Weight	Calving Ease	Maternal Calving Ease	Gestation Length	Scrotal Circ.	200 Day Milk	Docility	200 Day Growth	400 Day Growth	Muscle Depth	Fat Depth	Beef Value
EBV	-1.20	-1.0	-0.2	-2.7	-0.8	+1	-3.2	+7	+28	+0.3	+0.0	+37
Acc %	87	89	69	96	72	59	65	90	81	75	69	84

CALVING SURVEY	
Total Surveys	207
162 cows and 45 heifers	
Mortality	3.4 %
Avg Gestation Days	292
Size	Average 68.2 %
	Above Average 22.4 %
Conformation	Average 74.1 %
	Above Average 22.2 %
Non Surgical Vet Assistance	2.9 %
Surgical Vet Assistance	2.9 %

IVANTONOV

LIMOUSIN
Ivantanov

Sire: Bavardage
Dam: Coccinelle

HB No: FR8749281004
DOB: 11.10.13



Exceptional Calving Ease Sire

Superb Muscling and hindquarter development

Recommended for breeding suckler replacements

FRENCH PERFORMANCE DATA					
Beef Abilities Young Cattle on Farm			Individual Performance on Station		
Carcass Growth	104	Growth Potential	103	Functional Abilities	100
Carcass Conformation	118	Muscular Development	114	Breed Qualities	103
Total Merit for Beef Abilities on Farm	111	Live Beef Abilities	111	Pelvic Opening	97
Economic Proof for Beef Abilities	34	Skeletal Development	90	Type Growth	123

PEDIGREE

Sire **Bavardage**
PGS On Dit
PGD Ridelle

Dam **Coccinelle**
MGS Remix
MGD Vielle

GRISY

CHAROLAIS CULARD
Grisy

Sire: Ucello
Dam: Imail

HB No: FR6950643724
DOB: 30.07.11



Progeny consistently achieve top prices in local markets

Tremendous Muscling Ability

Above Average Growth

High Carcass Value

Average Calving Ease

Excellent Conformation

Not recommended for pure breeding

FRENCH PERFORMANCE DATA

Calving Ease	Early Muscularity Conformation	Calf Size	Fine Bones	Carcass Growth	Carcass Conformation	Total Merit for Beef Abilities	Economic Proof for Beef Abilities
104	114	88	104	103	112	111	€55

SEXY

CHAROLAIS CULARD
Sexy EXC

Sire: Jurix EXC
Dam: FR6951026756

HB No: FR6951163059
DOB: 30.03.21



Newly released sire with exceptional Calving Ease

Suitable for crossing onto dairy cows

281 Day Gestation Length

Early muscling ability with smooth fleshing

Not recommended for pure breeding

FRENCH PERFORMANCE DATA

Calving Ease	Early Muscularity Conformation	Calf Size	Fine Bones
114	117	79	125

ROBINSON P

CHAROLAIS CULARD
Robinson P

Sire: Nirvana P
MGS: Bastion

HB No: FR2144699388
DOB: 22.08.20



Exceptional shape and hindquarter development

Tremendous muscling with excellent growth rates

50% of progeny will be polled

Not recommended for pure breeding

FRENCH PERFORMANCE DATA

Growth Capacity	Muscular Development	Total Merit Index for Direct Effect	Carcass Growth	Carcass Conformation	Beef Ability
95	121	114	102	118	110

MINJOT

CHAROLAIS CULARD
Minjot EXC

Sire: Country

HB No: FR4341423129
DOB: 05.12.2016



Excellent Calf Conformation

Suitable for Dairy Cows

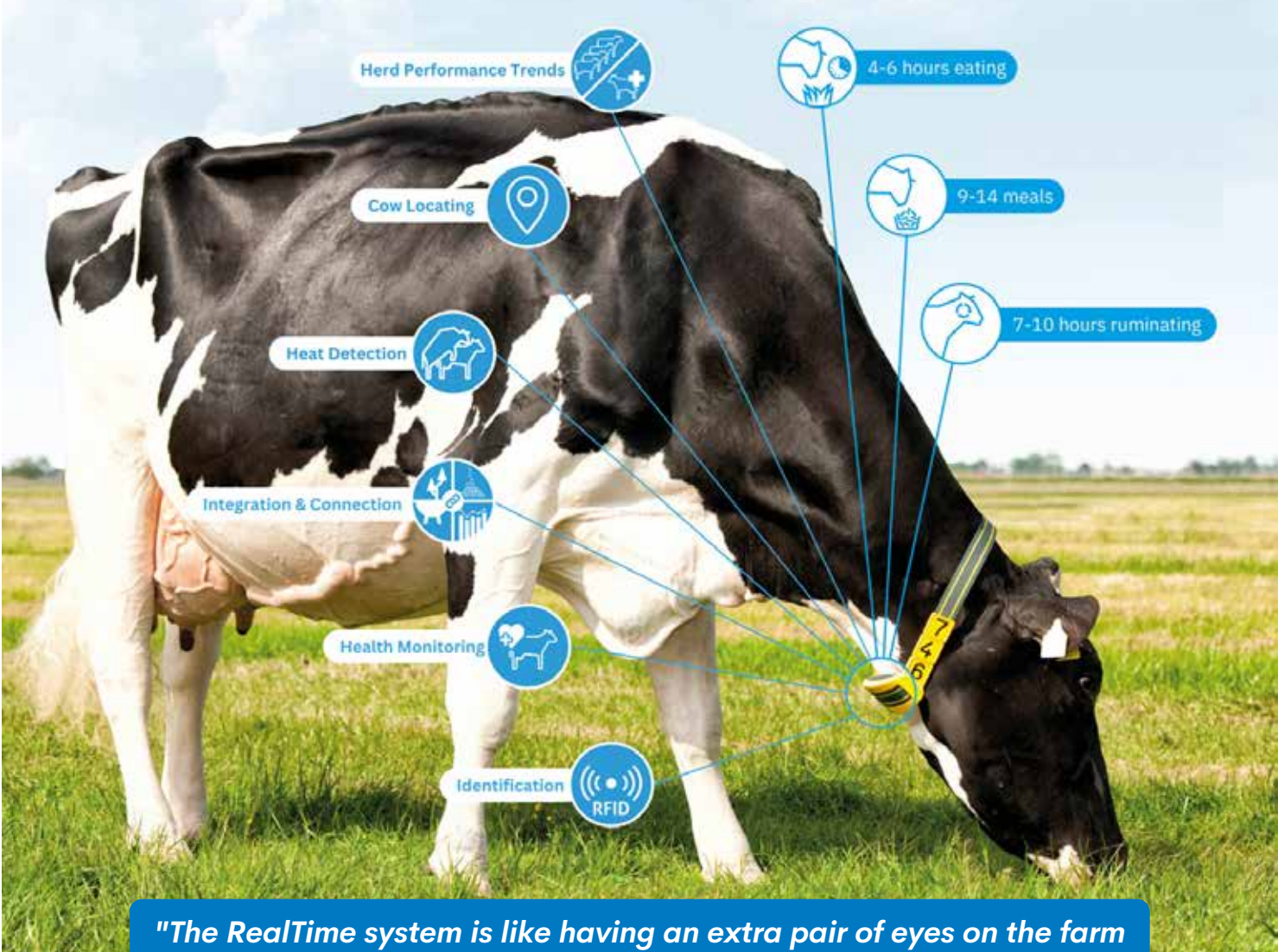
Progeny display early muscling

Not recommended for pure breeding

FRENCH PERFORMANCE DATA

Calving Ease	Early Muscularity Conformation	Calf Size	Fine Bones	Carcass Growth	Carcass Conformation	Total Merit for Beef Ability	Economic Proof for Beef Abilities
101	119	99	108	104	115	113	€68

ACTIVITY, EATING TIME & RUMINATION



"The RealTime system is like having an extra pair of eyes on the farm because the cows are being monitored 24/7"

Improve farm submission & conception rates!

Monitor Herd Health & receive Heat Detection alerts direct to your phone making it possible to automatically separate cows needing to be inseminated or treated according to heat and health alerts.

- Monitor or receive urgent health alerts based on Eating, Inactivity or Rumination
- Monitor Heat start times & insemination tracking
- Check Group Health status



BouMatic's RealTime powered by Nedap provides accurate heat detection with health monitoring directly to you.



To find out more contact your AI Services Breeding Specialist or scan the QR Code



FRANKY

INRA-95
Franky

Sire: Trimaran
Dam: Simone

HB No: FR8128401071
DOB: 11.11.10



Top Performance Sire
Excellent Carcass Conformation

FRENCH PERFORMANCE DATA

Calving Ease	100
Beef Abilities Young Cattle on Farm	
Carcass Growth	100
Carcass Conformation	140
Total Merit for Beef Abilities on Farm	129
Economic Proof for Beef Abilities	€122
Individual Performance on Station	
Growth	96
Muscular Development	145
Live Beef Abilities	124
Carcass Weight	104
Killing Out Rate	122
Conformation	140
Total Merit	122

RHESUS

INRA-95
Rhesus

Sire: LOCUS
Dam: MAGDA

HB No: FR1221019345
DOB: 29.08.20



FRENCH PERFORMANCE DATA

Calving Ease	113
Beef Abilities Young Cattle on Farm	
Carcass Growth	99
Carcass Conformation	132
Total Merit for Beef Abilities on Farm	118

Exceptional Calving Ease
278 Day Gestation Length

MEXPLOR

INRA-95
Mexplor

Sire: Explorer
Dam: Hysatis

HB No: FR916840411
DOB: 23.10.16



FRENCH PERFORMANCE DATA

Calving Ease	105
Beef Abilities Young Cattle on Farm	
Carcass Growth	119
Carcass Conformation	140
Total Merit for Beef Abilities on Farm	133
Economic Proof for Beef Abilities	€137

Progeny have excellent Growth Rates
Early Finishing Ability

Fertility Boost

Triple Mix British Blue



Knockagh Jubilant



Boroside Luxury



Springhill Rambo

Triple Mix Aberdeen Angus



Drumhill Lord Highway



HW Grenade



Drumhill Explorer

Aberdeen Angus + Aberdeen Angus + Hereford



Drumhill Lord Highway



HW Grenade



Barnburn 1 Ulsterman

Aberdeen Angus + British Blue + Hereford



Blackhaugh Philo



Chatham Olaf



Normanton 1 Willywonka

AI Services offers a selection of mixed beef semen. Mixed semen of this nature has been shown to significantly improve conception rates.

Triple Mix British Blue



Knockagh Jubilant



Borosiade Luxury



Chatham Olaf

Aberdeen Angus + British Blue + Limousin



HW Grenade



Borosiade Luxury



Claragh Neymar

Aberdeen Angus + Aberdeen Angus + Hereford



Drumhill Lord Highway



HW Grenade



Barnburn 1 Ulsterman

Aberdeen Angus + British Blue + Hereford



Drumhill Explorer



Chatham Ned



Normanton 1 Willywonka



Calf's Choice Total[®] 100

COLOSTRUM SUPPLEMENT & REPLACER

WHOLE BOVINE COLOSTRUM

Made with natural whole bovine colostrum. Not a manufactured formula based on whey, egg or other ingredients not naturally found in maternal colostrum.

An excellent source of essential colostrum protein, growth factors, and nutrients required by calves to optimize growth and reach genetic potential.

RICH IN COLOSTRAL FAT

An important energy source required by calves immediately after birth. Colostral fat is proven to help calves maintain body temperature through harsh hot or cold environmental conditions.

SAFE AND EFFECTIVE

Rigorously tested for safety and efficacy, it is free from TB, EBL, BVDV, IBR, Johne's, E.Coli, Salmonella and Brucella. GMP+ Feed Safety Assurance Assured.




SOURCED FROM LOCAL DAIRIES

CCT 100 is sourced from local dairy farms in Scotland & EU.

CONVENIENT

Easily mixes in under 15 seconds!
3-year shelf life.



-  **MADE WITH WHOLE BOVINE COLOSTRUM**
-  **HIGH IN ESSENTIAL COLOSTRAL PROTEIN**
-  **PURE COLOSTRAL FAT**

AI SERVICES
- NORTHERN IRELAND -

For further information, contact your local Breeding Specialist.

At Your Service...

Pregnancy Scanning

Regular pregnancy scanning is essential for keeping on top of fertility on any farm. Pre-breeding and pregnancy scanning services are available through AI Services.

DIY Training courses

Interested in AI? AI Services offers an extensive DIY training course with both veterinary and practical instruction.

Liquid Nitrogen

AI Services offer a reliable and trusted Liquid Nitrogen Delivery Service, keeping your DIY flask topped up every 3 months.

Embryo Transfer

At AI Services we have been providing successful Embryo Transfer Services to NI farms for over 20 years. Used by a range of commercial and pedigree beef and dairy herd owners, embryo transfer can fast-track genetic gain by producing up to 20 progeny each year from your best livestock and maximises on breeding by ensuring the continuity of the best bloodlines in the herd.

DIY Supplies

A selection of AI supplies are available for delivery.

For more information phone Ballycraigy on (028) 9083 3123.



Ai SERVICES
- NORTHERN IRELAND -



AI SERVICES
- NORTHERN IRELAND -

Ballycraigy 671 Antrim Road
Newtownabbey Co Antrim BT36 4RL
Tel: 028 9083 3123
Web: www.ai-services.co.uk
Email: info@ai-services.co.uk

To Book a Service Call or Pregnancy Scan, Telephone:

028 9083 3123

For further information contact your local Breeding Advisor:-

Our Breeding Partners



GGI-SPERMEX

